

# Changing Thymes

## Zeta Omicron Installed at Wake Forest University

On November 13, 1993, the installation of the former Wake Forest University Thymes Society as the Zeta Omicron Chapter of Kappa Alpha Theta resulted in the addition of 75 "like-minded" collegians and alumnae to the Fraternity's membership.

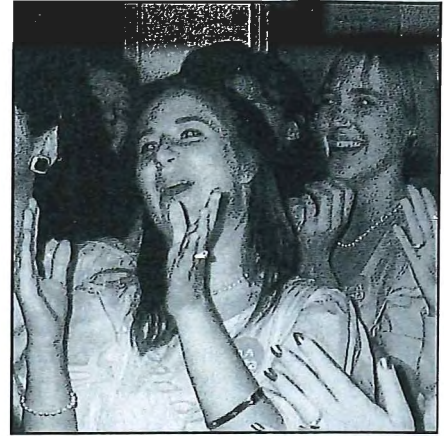
The matching of Kappa Alpha Theta with the Thymes women began last fall, when ten National Panhellenic Conference groups were chosen to make presentations to the six previously established local societies at Wake Forest University in Winston-Salem, N.C. At the close of the October 8 presentation weekend, Thetas were pleased to learn that the Fraternity was the first choice of the 64 members of the Thymes Society. Everyone involved in the presentation weekend felt Theta was a "perfect match" for the 25-year old society, whose membership includes the Wake Forest inter-society council president and student government president.

Right down to the weekly campus newspaper, "The Old Gold and Black," Wake Forest University also seems a

good match for Kappa Alpha Theta. The 160-year old private liberal arts institution, according to one University publication, focuses on "tradition, challenge, commitment and excellence."

Following four exciting, transitional weeks of member orientation with based consultant Julie K Ruffolo, the Fraternity installation team arrived at Wake Forest on November 12. The Friday evening festivities included the Loyalty Service, refreshments, opening gifts and a song session lead by some of the team members.

Initiation day began at 9 a.m. Saturday, Nov. 13, at the Graylyn Conference Center near the Wake Forest campus. Sixty-four collegians and 11 Thymes alumnae were initiated into Kappa Alpha Theta. Many area alumnae helped throughout the day. In addition, Beta Rho Thetas from Duke University were in attendance, coordinated by Beta Rho ritualist, Jill Rau. At the close of the day the new Zeta Omicron Chapter members were exclaiming how amazing the ceremony had been: They now knew what it meant to be a Kappa Alpha Theta.



**New Zeta Omicron members celebrate with Theta songs.**

The installation banquet was held Sunday at the beautiful Old Town Country Club. Advisory Board Chairman Pamela Ball served as toastmistress of the celebration brunch and Zeta Omicron Chapter President Meg Lewis lead the Founders Toast with the support of vice-presidents Laura Johnson, Jody Wooten, Tracy Seilers and Charlotte Knapp. Theta NPC Delegate Lissa Bradford addressed the group, commenting again on the perfect match made by Theta and Thymes. The high point of the day occurred when Fraternity Executive Director Marcia Bond presented the signed charter to the chapter.

**A team of ten Thetas gave presentations to six local groups and captured the hearts of the Thymes society. Team members included: Sue Supple, Director of Communication; George Maddox, CDP; Shannon Wilcoxon, Beta Rho chapter member; Margie Baum, Vice-President Development; Luci Jackson, Asst. Director of Communication; Grace Wang, Zeta Xi charter member; Julie Ruffolo, Chapter Consultant; Marcia Bond, Executive Director and Corinne Bergmann, ADP.**





Stephanie Wallen, Christina Habib, Martina Clark, Melissa Berry and Laura McGee celebrate as new Thetas.

The installation weekend ended with a surprise gift of Kappa Alpha Theta Greek letters for the new members of the Fraternity's 120th college chapter to display outside their hall. Theta was the first of the six new NPC groups to be installed at Wake Forest.

As the weekend concluded, Zeta Omicron Chapter members commented that the move from Thymes to Theta signaled not an end for them, but rather an exciting and challenging beginning.

**Julie K. Ruffolo**  
Chapter Consultant



After the Loyalty Service, the Zeta Omicron Chapter learned new Theta songs and sang traditional Thymes Society songs.

## Zeta Omicron Installation Team

**Lissa Bradford**

National Panhellenic  
Conference Delegate

**Sue Supple**

Former President

**Sue Blair**

Former Vice-President  
Development

**Marcie Wolfe**

College District President

**Corinne Bergmann**

Alumnae District President

**Pamela Ball**

Advisory Board Chairman

**Marcia Bond**

Executive Director

**Kelley Hurst**

Director of Alumnae Development

**Paige Thompson**

Executive Assistant

**Angela Merk**

College Services Representative

**Julie K. Ruffolo**

Chapter Consultant

**Sarah Scharber**

Assisting Chapter Consultant