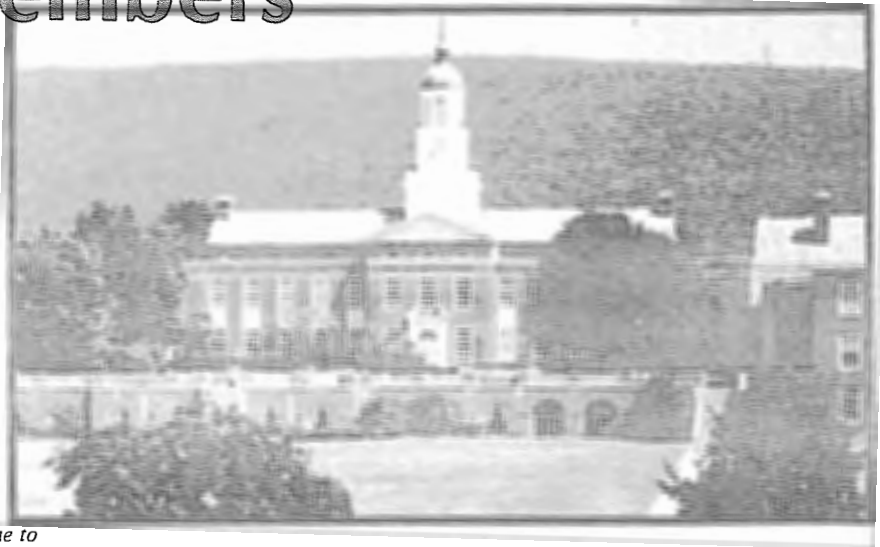


Bucknell welcomes Theta charter members



The Bucknell University campus is now home to Theta's Epsilon Pi chapter.



Bucknell charter members distributed voters' guides to the Lewisburg community for the League of Women Voters as their colony service project.

Twenty-nine enthusiastic charter members of Epsilon Pi proudly wore their badges following their installation November 16 through 18, 1984. As Kappa Alpha Theta installed its 106th chapter at Bucknell University in Lewisburg, Pennsylvania, the new initiates were welcomed into the bonds of sisterhood by Thetas from across the United States and Canada.

The installation weekend's events began with a Friday evening loyalty service conducted by College District President Marilyn Huseby. It was followed by a reception where refreshments furnished by local alumnae were served. Epsilon Pi President Laura Rojas opened gifts presented to the new chapter by Philadelphia alumnae, Alpha chapter, Chapter Consultant Julie Kay Sheldon and the Fraternity.

Initiation services were held Saturday. Grand President Sue Supple led the installation team which included: Grand Vice-President College Carol Brehman; Grand Vice-President Development Marian Paoletti; Central Office Executive Secretary-Treasurer Marcia Bond; College District President Marilyn Huseby; Alumnae District President Sally Hughes; and Julie Kay Sheldon and Donna Dent, chapter consultants. Paula Quinlan was the local installation chairman.

Penn State chapter members acted as the assisting chapter, and members from Cornell University and Virginia Polytechnic Institute participated in the installation activities. The State College Alumnae Club showed their support by hosting a reception for the colony following the initiation service.

Sue Supple presented the new chapter with their charter Saturday evening at Bucknell University's Hunt Hall Library. After the service, new members were joined by families and friends for the Installation Banquet. Bucknell President Gary Sojka welcomed the

Epsilon Pi Charter Members

Patricia Albright	Cears, Pennsylvania
Ann Bennett	Bridgewater, New Jersey
Susan Bernarde	Stratford, New Jersey
Mary Blanchard	Ellicott City, Maryland
Kathleen Brown	Rockville Centre, New York
Rachel Cancro	Garden City, New York
Laura Casey	Needham, Massachusetts
Ellen Chang	North Brunswick, New Jersey
Victoria Chertok	Bethesda, Maryland
Marivelle Clavel	Blairstown, New Jersey
Joan Cresap	Rye, New York
Lauren Finston	Boonton, New Jersey
Elizabeth Gewanter	Great Neck, New York
Rhonda Giordano	Sussex, New Jersey
Elizabeth Green	Newton, New Jersey
Annette Guarino	Norwood, New Jersey
Andrea Hanlon	Oradell, New Jersey
Sarah Jacobs	Bernardsville, New Jersey
Jennifer Jones	South Orange, New Jersey
Nadine Kuveke	Bronxville, New York
Mary Jo Murawski	Elysburg, Pennsylvania
Debra Myers	Haworth, New Jersey
Emily O'Connor	Pittsburgh, Pennsylvania
Kathleen Orstrom	Navgatuck, Connecticut
Christina Pascucci	Franklin Lakes, New Jersey
Elizabeth Perez	Valley Stream, New York
Laura Rojas	Brooklyn, New York
Sue Waldner	Camp Hill, Pennsylvania
Diane Yasinsky	Pittsburgh, Pennsylvania

Fraternity to the campus, and the installation team participated in the program conducted by Marilyn Huseby.

Sunday morning Thetas attended a model chapter meeting followed by services at the First Presybyterian Church. Later that afternoon, an all-campus reception honoring Epsilon Pi was held at the Hunt Hall Formal. The new initiates were greeted by Panhellenic and campus friends.

Local alumnae who were a consistently strong support group for the new chapter included Paula Quinlan, Ann Grundstrom, Marilyn Jenkins, Priscilla Jones and Jeanne Williamson.

Throughout the busy weekend, Thetas gave of their time and energies, and warmth and love were exemplified.

Julie Kay Sheldon, chapter consultant



Epsilon Pi charter members gather together as new initiates of Kappa Alpha Theta's 106th chapter.