

THE  
**kappa alpha theta**  
 MAGAZINE

Editor  
**Jane Brokaw Gallup**

THE KAPPA ALPHA THETA MAGAZINE (ISSN 0746-3529) is published quarterly Autumn, Winter, Spring and Summer by Kappa Alpha Theta Fraternity for Women, 8740 Founders Road, Indianapolis, IN 46268. Second-class postage paid at Indianapolis, IN and additional mailing offices. Yearly subscription \$1.00

POSTMASTER: Send address changes to Kappa Alpha Theta, 8740 Founders Road, Indianapolis, IN 46268.

- Printed in the United States of America at George Banta Company, Inc., Curtis Reed Plaza, Menasha, WI 54952.

- Address correspondence, pictures and copy to the editor, Mrs. John C. Gallup, 5208 Sand Point Pl., N.E., Seattle, WA 98105.

- Send notices of deaths and all name changes to Kappa Alpha Theta, 8740 Founders Road, Indianapolis, IN 46268.

### SPECIAL FEATURES

- 2 Villanova Installation
- 3 Council names AAA chapters
- 4 Rushing around at Phi
- 11 Changing Sorority Image
- 22 Advisers' Target School
- 23 Always on Sunday
- 36 Second best at 22

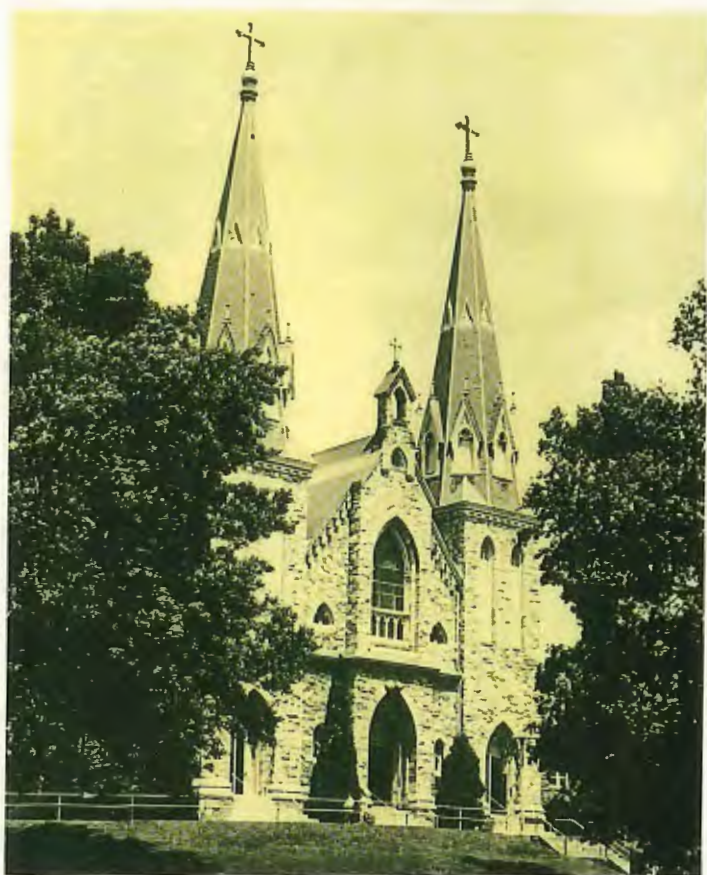
### REGULAR FEATURES

- 33 Obituaries
- 34 Introducing

### FRATERNITY FACTS

- 6 Recommendation Form
- 7 Rush Information
- 14 Keep Appreciating Theta Donors
- 24 College Chapter Directory
- 25 Alumnae Chapters/Clubs
- 31 Permanent Alumnae Secretaries
- 32 State Chairmen
- 38 Fraternity Directory

Established 1885



*St. Thomas of Villanova Chapel. The spires of the chapel have become a symbol of Villanova University.*

## New Chapter at Villanova

Kappa Alpha Theta has become the fourth women's fraternity to establish a chapter at Villanova University since the 142 year old Catholic school invited national sororities onto the campus two years ago.

Epsilon Xi chapter was installed November 19, 1983 and joined Kappa Kappa Gamma, Alpha Chi Omega, and Delta Delta Delta in establishing a strong Greek system at Villanova.

The University has undergraduate colleges in Arts and Sciences, Engineering, Commerce and Finance, Nursing, and University College. Located in Villanova, PA the 200 acre suburban campus is 12 miles from Philadelphia. The University enrolls around 6,000 undergraduate students and 3,000 graduate students.

Gloriane Curry Browne, Alpha Phi, Newcomb is advisor to the new chapter. Betsy Sierk, resident counselor was assigned to work with the pledge class as a colonizer and remained with the new chapter throughout the school year, living in Villanova.

Members of Epsilon Xi's charter class all come from homes on the east coast, reflecting pretty closely the pattern of enrollment of the University. However, the geographical makeup of the student body is gradually changing and attracting students from throughout the country.

(Installation story pg. 35)



*Charter members of Epsilon Xi at Villanova University*

## Epsilon Xi installed at Villanova

by Betsy Sierk

Pledges of Epsilon Nu colony held a kite fly the week before the installation to announce to the campus that Kappa Alpha Theta was about to arrive officially at Villanova. Then big sisters from the Philadelphia Alumnae Chapter shared a special evening with the pledges before their initiation.

The first event of the traditional weekend was the Loyalty Service at the home of alumna Danna Nehrbas. Saturday evening alumnae, family and friends joined the new Thetas at the Installation Banquet, presided over by College District President, Marilyn Huseby. Grand President Lissa Bradford presented the charter to the new chapter. Other officers attending were Lynne Davis, GVP Service; Carol Brehman, GVP College; Louis Geil, Grand Council Member-at-Large; Sally Hughes, Alumnae District

### *Charter Members*

Lisa Capanna-Bound Brook, NJ; Deborah Cogshall-Northwales, PA; Kelly Deegan-Malvern, PA; Kristine Djuvik-Furlong, PA; Jane Dorisio-Delran, NJ; Therese Dwyer-Clark NJ; Kathleen Fetzer-Essex Falls, NJ; Tracy Haushalter-Westfield, NJ; Paula Kaye-Cherry Hill, NJ; Kimberly Kramer-Patterson, PA; Melinda Levengood-Pottston, PA; Anna Lokay-Souderton, PA; Megan Long-Maitland, FL; Colleen Lynch-Greensburg, PA; Kimberly McCue; Shelia McGuire-Furlong, PA; Katie McLaughlin-Drexel Hills, PA; Katherine Monges-Oyster Bay, NY; Heather O'Connor-Silver Springs, MD; Dawn Oliver-Hackensack, NJ; Suzanne Paradise-Westfield, NJ; Kimberly Phipps-Norwalk, CT; Julie Quigley-Brandendon, FL; Mary Ann Ricca-Merrick, NY; Suzanne Schwind-Andover, MA; Joanne Skevington-Princeton, NJ; Sharon Tremewen-Holland, PA; Betty Jo Zbrzezni-Manor, PA; Tara Austin-Bound Brook, NJ (alumna initiate).

President; Betsy Sierk, and Joni Schneider, Resident Counselors.

Epsilon Lambda, Dickinson College, celebrated its first birthday assisting with the installation. Surprise visitors at the Villanova campus were charter members of Epsilon Nu who had been installed just weeks before at Virginia Tech.

Caroline Sproule, Beta Rho, Duke served as local chairman for the Installation Weekend. Other alumnae assisting at Installation Weekend were Elizabeth Borst, Lyn Simensen, Louise Cuppeli, Karen Sherwood, Marianne McClennen and Eileen White.

Activities continued on Sunday with a model chapter meeting led by members of Grand Council and area alumnae. Then Thetas, family and friends attended Mass in the college chapel. Sunday afternoon Thetas greeted Villanova students at the Installation Reception.