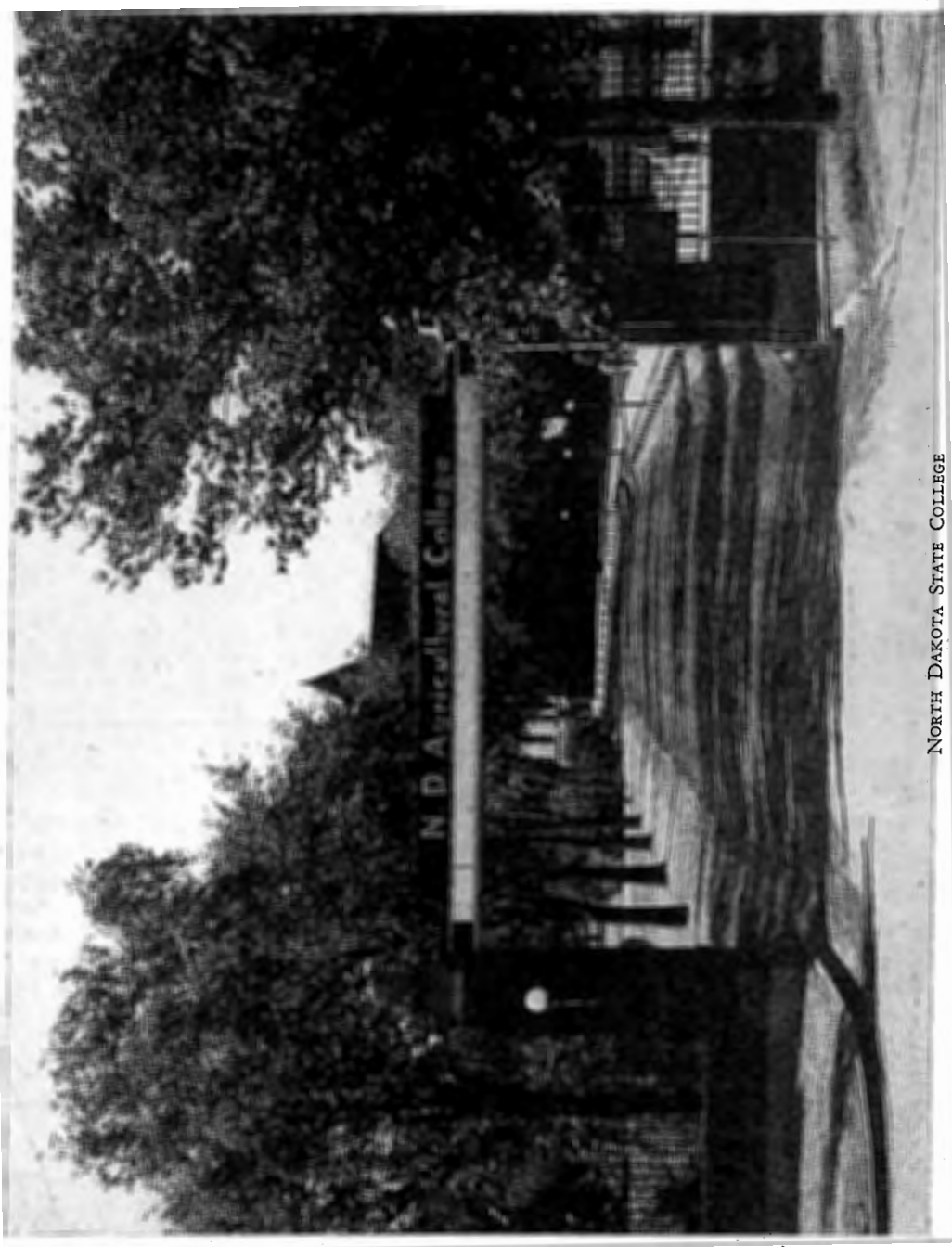


Installin Newest

What a thrill and honor of pledging Alpha Theta a group fraternity experience transferred to new devotion. So it is with Gamma Nu, which a procedure, good school campus reputation, alumnae relationship of its own. Ours was assimilating this group and know-how. We get inspiration and the great things from theirness and earnestness. Something new and



NORTH DAKOTA STATE COLLEGE



MRS MOORE—DE
SPEAKER

Taking our cue hammed, since we count mountain of new student convention for installation. In doing birds with this one wonder why we have taken the eleven Gamma convention in Atlanta

October
1947

Installing Theta's Newest Chapter

What a thrill and a challenge to have the honor of pledging and initiating into Kappa Alpha Theta a group of women who have had fraternity experience—to see deep loyalties transferred to new channels of interest and devotion. So it is when we add a chapter like Gamma Nu, which already has fine patterns of procedure, good scholarship habits, an enviable campus reputation, splendid college member-alumnæ relationships and an attractive home of its own. Ours will be a pleasant task of assimilating this group with proved abilities and know-how. We need to furnish only the inspiration and the guiding hands. We expect great things from this infusion of their eagerness and earnestness into our fraternity life. Something new and true has been added!



Mrs. MOORE—DEAN DINAN, KKT, GUEST
SPEAKER—MRS. GRIMM

Taking our cue from the wisdom of Mohammed, since we could not take this veritable mountain of new strength (65 of them) to a convention for instruction and inspiration, we took the District X convention to the chapter's installation. In doing so we killed so many birds with this one stone of our bright idea, we wonder why we had not done it before (we took the eleven Gamma Mu neophytes to the convention in Atlantic City to be installed).

Thus we were assured of more than enough hard working committee members, as well as a large attendance at sessions. With sixty-five new members wanting to learn everything about Theta in three days, there were no dull nor idle moments. We accelerated their fraternity education by at least three years. They experienced Theta. There is no better way!

Personally I count this one of my richest fraternity experiences—working with a group so single minded and determined, and seeing realized its dream of association with us in Kappa Alpha Theta, knowing my fraternity can and does serve and bring real satisfaction to mature women as well as to college students.

The cordiality of the college administration; the spirit of Panhellenism as exemplified by the friendliness and helpfulness of Dean Dinan, a distinguished member of Kappa Kappa Gamma; the many courtesies of the college and alumnæ Panhellenics (notes of welcome, flowers for the banquet table, a luncheon for the visiting officers, to mention only a few); the untiring cooperation of the Fargo Theta club which was formed to aid this new group; Alpha Pi acting as real big sisters, coming in mass to put on the pledge and initiation services; the midnight meetings and delectable snacks; and much correspondence with the indefatigable and charming committee of seven which represented the petitioning group in all our negotiations; the eager but always poised college chapter; an alumnæ organization which could vie for honors with any of our alumnæ chapters for enthusiasm and ability to work; our grand new District president getting her sea legs in this storm of activity and new responsibilities; the quiet efficiency of our Central office throughout the months of preparation; the careful attention to detail of our Executive secretary so that the Grand president and I were free to assume our roles as visiting dignitaries. Yes, Theta is richer by one chapter, but all of us who had any part in all this are richer by many, many new friends—the true meaning of fraternity.

PAULINE B. MOORE

[7]

FACTS AND FIGURES

It was March 30 when Mrs Moore, Grand treasurer, Mrs Merrick, President of District X, and Alpha Pi active members went to Fargo to pledge to Kappa Alpha Theta 64 members of the local Beta Xi at the North Dakota State college in Fargo. The new-to-be-Thetas included 29 Fargo resident alumnæ of Beta Xi; 5 seniors, 5 juniors, 12 sophomores, and 13 pledges from the 1946-47 rush.

In February, at District VII convention in

Throughout the Installation, Alpha Pi members and officers, helped these installing officers with all services, providing fine music, able assistant officers, etc. etc. while the Theta alumnæ club in Fargo looked after all details of where and what, and arranged for the social events of both installation and convention. Grateful thanks of the fraternity go to these indispensable and able groups.

And now read what the Thetas who best know the women and girls of Gamma Nu have to say about them—



MARY HELEN RILEY—MRS MERRICK (P)—MRS WOLSTEN (CONV. MANAGER)

Atlantic city, a *first* had been established by the fraternity—installing a new college chapter, Gamma Kappa, as a convention feature. This experiment was so successful and popular, that when the votes were counted and Beta Xi was ready to become a Theta chapter, the decision was to have its installation too at a District convention. District X's convention place was shifted to Fargo, and planning went ahead rapidly. Needless to say, this installation was THE FEATURE of convention, and helped to increase both attendance and enthusiasm.

Thursday the nineteenth of June, one thousand nine hundred forty-seven—that is the date of the formal entry of Gamma Nu chapter into Kappa Alpha Theta. And here in brief is the program—June 19, initiation of alumnæ in afternoon, of college chapter members in the evening, then two days of convention, which they all attended, then on the 21st the formal installation banquet, followed by the presentation of Gamma Nu's charter by Grand president Grimm. After the convention crowd had departed the installing officers—Mrs Grimm, Mrs Moore, Miss Sackett, and Mrs Merrick, helped the chapter conduct its first chapter meeting on June 22.

A NEIGHBOR'S WELCOME

Alpha Pi is especially happy and proud to welcome Gamma Nu into Theta. Having a brand, new chapter so near is like having a baby sister—one which we will watch grow larger and stronger, one which we will encourage and help in every way we can.

Not only the short distance between us, but also the fact that so many Alpha Pi's were able to take part in the pledging and initiation of Gamma Nu makes us feel that there is a strong kinship between our two chapters. We visited the Gamma Nu's informally at their house; we chatted with them, and we found that we liked them. At the time of their pledging we talked about what wonderful Thetas they would make, and we are still talking about it.

The Thetas of Alpha Pi are looking forward to seeing much more of the Thetas of Gamma Nu. We hope that they will come to Grand Forks and visit us. We hope their initiation into Theta will be only the beginning of many wonderful get-togethers.

WELCOME FROM FARGO ALUMNÆ CLUB

Fargo Thetas are exceedingly glad to welcome Gamma Nu chapter to North Dakota

Agricultural college car

It has long been the traditional organization of would see fit to organize. Now that desire has club Thetas are looking with the new College ch Theta Alumnæ join our renewed enthusiasm with personal contacts, enriching with their varied talents

It is inspiring that to be found in almost every and often taking leadership that members of Gamma Nu only shoulder their respective many outstanding contributions Theta, their Alma Mater

ADA



MISS HELEN SACKETT, ex chapter manager

Installation, Alpha Pi members these installing officers providing fine music, able etc. while the Theta alum- looked after all details of d arranged for the social tallation and convention. the fraternity go to these le groups. hat the Thetas who best girls of Gamma Nu have

Agricultural college campus.

It has long been their desire that the national organization of Kappa Alpha Theta would see fit to organize on the Fargo campus. Now that desire has been realized and we club Thetas are looking forward to working with the new College chapter and have the new Theta Alumnae join our club. They will bring renewed enthusiasm with their many fine personal contacts, enriching Theta's membership with their varied talents.

It is inspiring that these new Thetas are to be found in almost every community group and often taking leading parts. We predict that members of Gamma Nu chapter will not only shoulder their responsibilities, but make many outstanding contributions to Kappa Alpha Theta, their Alma Mater, and the world in general.

ADA MEADOWS WALSTER

THEY SPEAK FOR THEMSELVES

An additional Theta chapter is reporting for the first time. Gamma Nu is proud of Theta, and we hope Theta will be proud of Gamma Nu.

Installation services were in conjunction with District X convention in Fargo. We were honored to have attending Mrs Grimm, Grand president, Mrs Moore, Grand treasurer, Miss Sackett, Executive secretary, and Mrs Merrick, District president.

Two hundred Thetas attended the three-day convention. Delegates resided in one of the girls' dormitories on campus. Business sessions and installation services also were on campus. Several lovely luncheons and dinners were given honoring delegates.

Beta Xi local struggled a lot during rushing, competing with five nationals on campus—Kappa Kappa Gamma, Gamma Phi Beta, Phi



OUR WELCOME

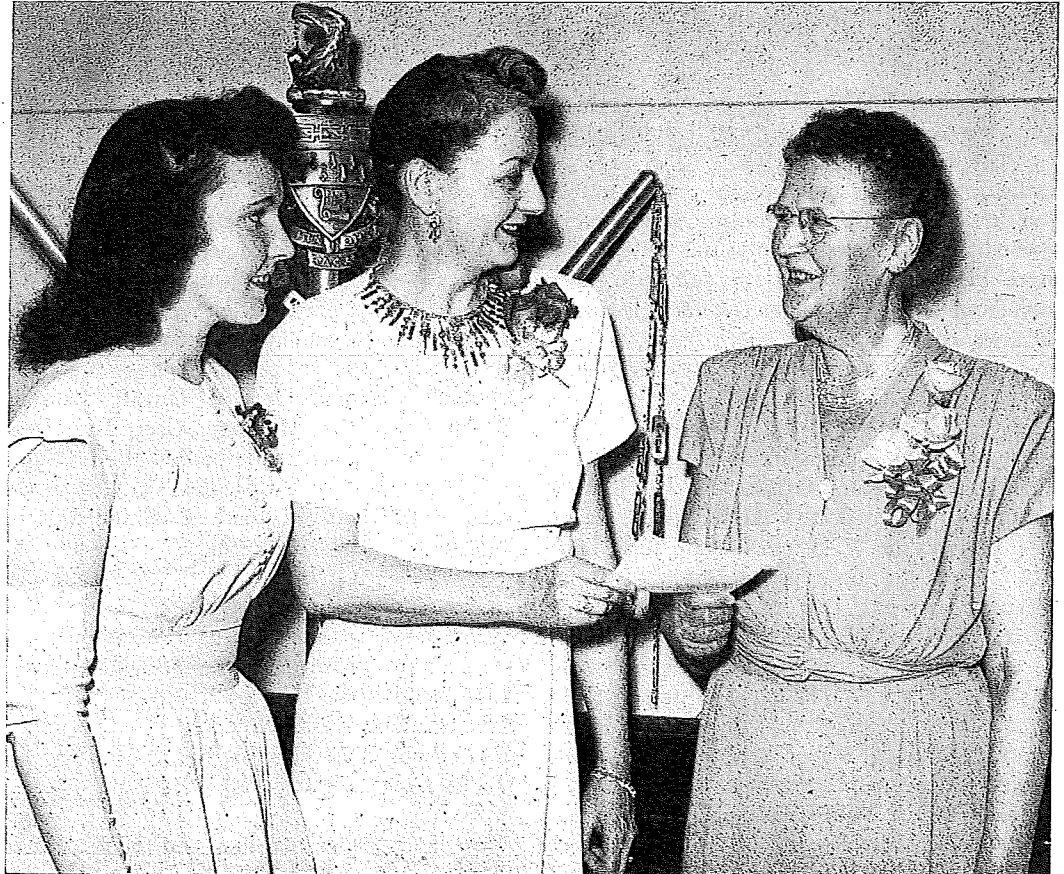
Ily happy and proud to into Theta. Having a near is like having a baby will watch grow larger h we will encourage and can.

distance between us, but any Alpha Pi's were able edging and initiation of eel that there is a strong vo chapters. We visited mally at their house; we we found that we liked heir pledging we talked Thetas they would make, g about it.

Pi are looking forward f the Thetas of Gamma y will come to Grand ope their initiation into eginning of many won-

FARGO ALUMNAE CLUB

ceedingly glad to wel- pter to North Dakota



MISS HELEN SACKETT, executive secretary, presents a shingle to Mrs Leon Metzinger, active in the alumnae chapter. Mary Helen Riley, immediate past chapter president, is at the left.



INSTALLATION BANQUET: *Left to right: Ruth Enlow, former pledge president; Lois Hooper, rush chairman; Dolores Martinson, active alumnae secretary; Ann Stegner, assistant chapter treasurer; Marion and Ellen Stemme, alumnae; Dorothy DuVall, combination straight "A" student and queen of the barn dance; Ann Yvonne Hess, alumna; Jean Warner, past chapter president, and Peggy O'Brien, past active vice president.*

Mu, Alpha Gamma Delta, and Kappa Delta. But Beta Xi did surprisingly well as evidenced by the wonderful pledge class.

During this housing shortage, we appreciate our chapter house, the only chapter house owned by a woman's group at this college. We have big plans brewing for fall rush, with numerous ideas from other chapters gleaned at District convention.

LOIS HOOPER

GAMMA NU'S ROSTER

Charter members: alumnae—Katherine Jensen Metzinger, Ruby Grimes, Marion Johnson Williams, Edna Akre, Edith James Leeb, Marion Addison, Elizabeth Hogan, Ruth Dawson, Rose Lane Jones, Viola Larsen Jordheim, Beatrice Bosworth Duncan, Marguerite Jongeward Severson, Grace Johnson Hanson, Norma Devol Sorlien, Marion Sorlie Wilner, Marion Hartley McMahan, Grace Swanson Ordahl, Ethel Dahl Michaelsohn, Eleanor Erickson Peschke, Barbara Scatterday Sornsin, Elizabeth Covert Woodley, Emily Reynolds, Jean Halbeison Hector, Mildred Strong Bean, Bernice Wickman Fercho, Anne Yvonne Hess, Beverly Halbeison, Patricia Wilson, Lorna Longwell, Jean Warner, Jean Stennue Reitan; actives—seniors, Peggy O'Brien, Ellen Stemme, Mary

Helen Riley, Mary Lou Kraemer, Eileen Herges; juniors, Dolores Martinson, Jean Rinde, Lois Hooper, Helen Enlow, Joyce Hudson; sophomores, Grace Swigart, Anita Quick, Gail Nelson, Eunice Anderson, Phyllis Gustafson, Carol Johns, Lorraine King, Alice Walla, Marlys Haarsager, Betty Jean Nelson, Florence Tiegen, Donna Jean Neller-moe. Charter members—total, 31 alumnae, 22 actives. Also initiated, after the charter members, were these 1946-47 pledges: Dorothy Duvall, Dorothy Webb, Carol Alm, Madronna Geer, Anne Stegner, Marvel Bovaird, Meredith Sorley, Connie Eide, Ruth Enlow, Pat Hadler, Ferne Zimmerman, Ruth Theobald, total 12. Grand total of new Thetas in Gamma Nu, 65.

A BANQUET TOAST

White seeds, red seeds, seeds of every hue,
Green seeds, brown seeds, maybe some are blue.
Like 'tatoes some have open eyes,
Like corn plants some have ears—
To see you Thetas as you are,
To hear you talk as peers.

Now if perchance that here and there
A sour grape may be—
Have patience and refine the thing
To wine of excellency.

KAPPA ALPHA THETA

Perchance there's one that
Just like bananas peeled.
While others bring forth
In such abundant yield.
Some as sweet as peaches
With blooms for honey l
Some may grow quite lol
As mighty forest trees.

But search this group v
Our heritage peruse,
There's one seed you'll r
No lemons could we us

MARION J.

THE CA

North Dakota Agric
cated on 960 acres imm
city of Fargo. The colle
cludes one hundred acre

Kappa Alpha
today we should
lowers, as leader
should be placed
cooperation, and

Fifth Year

For some years now it
Theta's privilege to m
awards from its Loan
These awards go to out
able them to add a fifth
to their preparation fo

The award section of
ship committee, Toro
nounced three such aw
year, 1947-48. The wir
Holzer, Alpha Tau chap
wards, Alpha Xi; and

Perchance there's one that can be skinned
 Just like bananas peeled.
 While others bring forth nuts to crack
 In such abundant yield.
 Some as sweet as peaches
 With blooms for honey bees,
 Some may grow quite lofty
 As mighty forest trees.

But search this group with microscope,
 Our heritage peruse,
 There's one seed you'll not find herewith—
 No lemons could we use!

MARION JOHNSON WILLIAMS

THE CAMPUS

North Dakota Agricultural College is located on 960 acres immediately adjoining the city of Fargo. The college campus proper includes one hundred acres on which are located

35 buildings. The rest of the land is occupied by a vast spread of experimental grain plots, animal husbandry grounds, barns, gardens, and orchards.

Old Main is a two-story brick and red sandstone structure, 79 x 90 feet, built in 1891. It accommodates the executive offices, the post office, the Little Country theater, class rooms, and offices of the department of speech, the Alumni association office and book store.

Included on the campus are men and women's dormitories, a stadium accommodating 12,000 sports fans, five greenhouses, a Field house, 284 x 122, a Health center, a Home management house, and a fine library of 67,000 volumes.

The quiet spaciousness of the campus is suggested by the view of the main gate, on Fargo's north side. Streets through the campus wind through green lawns and well-tended rows of trees.

Kappa Alpha Theta Founders pioneered for educational opportunities for girls, today we should pioneer in developing leadership, and learn how to be "able followers, as leadership is of no use without followers. In every chapter emphasis should be placed on the responsibility of each individual girl, upon a spirit of cooperation, and on freedom from prejudice in act or thinking."

Fifth Year Awards

For some years now it has been Kappa Alpha Theta's privilege to make annual Fifth year awards from its Loan and fellowship fund. These awards go to outstanding seniors, to enable them to add a fifth year of specialized study to their preparation for a chosen vocation.

The award section of the Loan and fellowship committee, Toronto alumnae, has announced three such awards for the academic year, 1947-48. The winners are—Audrey Ann Holzer, Alpha Tau chapter; Elizabeth Ann Edwards, Alpha Xi; and Barbara Ball, Beta Xi.

Each of them graduated last June, at the universities of Cincinnati, Oregon, and California at Los Angeles, respectively.

Audrey Ann, will study for a MA in Social service administration, specializing in psychiatrics. Elizabeth Ann will work toward a career in public administration research problems. Barbara plans to teach history, so will be working for a MA and a junior college credential.

Before the end of the year we hope to have news of where they are studying and how they are progressing.



Lois Hooper, rush chairman; Marion and Ellen Stemme, valedictorians; Ann Yvonne Hess, vice president.

Lou Kraemer, Eileen Dolores Martinson, Jean Helen Enlow, Joyce Hudace Swigart, Anita Quick, Anderson, Phyllis Gustafrraine King, Alice Walla, Betty Jean Nelson, Florence Neller-moe. Charter members, 22 actives. Also initiator members, were these: Dorothy Duvall, Dorothy Adronna Geer, Anne Steg-Meredith Sorley, Connie Hadler, Ferne Zimmer-total 12. Grand total of 34 Nu, 65.

NET TOAST

... seeds of every hue,
 ... eds, maybe some are blue.
 ... e open eyes,
 ... ave ears—
 ... you are,
 ... eers.

... here and there

... ne the thing