

# Kappa Alpha Theta



BELMONT COLLEGE CHAPEL

VOLUME 61

MAY

NUMBER 4

1947

### *Kappa Alpha Theta*

is a mass of detail, and racing to meet the office follow the lations—we are just spins into action.

It was with great enthusiastic and cooperation with whom we have weeks and who have for months laying the to-be-charter-member list of names but who suddenly became lectively vivid persons warmly at an informal chapter room. The for which all had various phytes working to perfection and the rest of initiation, banquet, money a day never to chosen members of week-end long to be at a tea on Sunday of Gamma Lambda faculty and student terested Thetas.

### **Alum**

INFUSION is the Dr Abbie Findlay the installation banquet in and that is in colonization of Gamma cooperation and loyalty poured into the present results. We had assistance and the administration college opening was the new dormitories completed, (we couldn't two weeks) and always. We were given a faculty home, for the wife of the president Miss Carolyn Shep Croneis, both members us the real Panhellenic helpful acts that contribute

Rockford alumnae est organized group



CHARTER MEMBERS OF GAMMA LAMBDA

*Clockwise (starting at front). Louise Collins, Patricia Bannen, Virginia Edwards, Dorthea Vaughan, Gail Enslow, Joan Hohmann, Joan Lindemer, Dorothy Goll, Barbara Grever, Carolyn Love, Corinne Keating, Virginia Irgins, Doris Lanum, and Elizabeth Owens. Diann DeWeese, center.*

May, 1947

is a mass of detail, voluminous correspondence and racing to meet deadlines. The mechanics in the office follow the same pattern for all installations—we are just a cog in the big wheel that spins into action.

It was with great joy that we met the enthusiastic and cooperative group of alumnae with whom we had been corresponding for weeks and who had been working untiringly for months laying the ground work for the Beloit installation. The real thrill was meeting the to-be-charter-members, who had heretofore been just a list of names to be engraved on badges, but who suddenly became individually and collectively vivid personalities as they greeted us warmly at an informal party given in their new chapter room. The following day was the one for which all had worked and waited, the neophytes working to make their grades for initiation and the rest of us working to make this initiation, banquet, and charter granting ceremony a day never to be forgotten by these newly chosen members of Kappa Alpha Theta. A week-end long to be remembered was concluded at a tea on Sunday when the charter members of Gamma Lambda were introduced proudly to faculty and students of Beloit, and many interested Thetas.

HELEN E. SACKETT

### Alumnae Activity

INFUSION is the word for it, according to Dr Abbie Findlay Potts, Iota, toastmistress for the installation banquet. Infusion means a pouring in and that is indeed what happened in the colonization of Gamma Lambda. The efforts, cooperation and loyalty of many Thetas were poured into the project with most satisfactory results. We had assistance from outside sources; fate and the administration—fate, in that college opening was delayed two weeks because the new dormitories for women were not completed, (we couldn't have done it without those two weeks) and administration help in many ways. We were given the use of Ingersoll house, a faculty home, for rushing. Mrs Carey Croneis, the wife of the president of Beloit college, and Miss Carolyn Shepard, secretary to President Croneis, both members of Pi Beta Phi, showed us the real Panhellenic spirit. They did so many helpful acts that could never be enumerated.

Rockford alumnae Theta club, being the nearest organized group of Thetas, was selected to

supervise colonizing. It is in District II, Beloit in District X, but the 18 miles we traveled often, while making planning sometimes difficult, did not handicap final accomplishments. In Beloit, there are five Theta alumnae, and we quickly became acquainted and combined our efforts.

Starting August 12, with a meeting at the home of Rockford Theta club's president, Dorothy McConnel Frick, Alpha Chi, we began intensive work to secure information and recommendations on new women students entering Beloit. The response and fine work done by alumnae all over the country was appreciated greatly. We were able to start rush with information on over 90% of the entering class. Panhellenic gave us permission, during the short time before college opened, to pledge any unorganized girl who had been enrolled at the college the previous year. Two such girls were pledged.

We proudly claim even to have secured our one colonizer, Diann DeWeese, who had just completed her sophomore year at Butler university. Here is how it happened. One Sunday morning, Bernie Long Kiefer, Alpha Chi, had a brilliant thought. The daughter of Frances Carr DeWeese, Alpha Chi, Diann, might be just the Theta for whom we had been searching. She had everything—scholarship, appearance, ability, and a strong Theta background. We called Mrs Grimm in Kenilworth and Diann in Indianapolis that day, and in two weeks Diann was in Rockford ready to join forces with our colonizing committee. When we met Diann we knew immediately it could be done. After her arrival we pledged Virginia Edwards, Beloit, and Doris Lanum, Libertyville, Illinois. At a tea in the home of Dorothy Frick, we introduced Diann to Rockford alumnae club and had a formal pledging, conducted by Mrs Grimm, Grand president.

Fortunately, in the Rockford club and in Beloit, there were eight or nine girls not so long out of college that they had forgotten how to rush. Even many of us older alumnae found it necessary to brush up on the techniques and do some active rushing.

Here is where infusion really began. Infusion as well as confusion. Psi at Wisconsin sent girls down for all six parties. Tau at Northwestern sent girls for the last three parties. All brought their song leaders, songs, skits, table



Dorthea Vaughan, Gail  
Corinne Keating, Virginia

May, 1947

cloths, napkins. Evelyn Olson Winnie, former District X president, came from Milwaukee for the first three parties and President Grimm was here for the last three. Alumnae from Wauwatosa, Milwaukee, Janesville, Harvard, and the north shore of Chicago came to help. The house was tense with a spirit it is hard to describe. Naturally it was exciting and most confusing; at times we even found ourselves rushing Thetas. It was certainly anything but a local rush. . . . Doris and Virginia, the two pledges, were the only ones who knew anything about the college, but the rushees didn't seem to mind. Saturday night, October 19, was formal rush night, and Sunday, many from Rockford (including the overnight Theta guests) drove to Beloit to be with Diann when THE LIST came. I am sure none of us who were there will ever forget that moment!!

We were thrilled and delighted to find we had on our list twelve outstanding girls, and we were certain each had the pioneer and adventurous spirit to carry on. That afternoon the Founders of Gamma Lambda chapter of Kappa Alpha Theta were pledged.

Our story does not end here. What could one lone Theta do with 14 pledges? Obviously it would not be humanly possible for Diann to fill all chapter offices so we made up a chapter of six younger alumnae from Rockford and one from Beloit. They took office, and drove to Beloit every Monday night to meet and counsel with the girls. It is not possible for me to describe how much Diann gave of herself to place Theta in its proper place on Beloit campus, or what she has given to those 16 girls. She became to each girl a personal adviser on scholarship, all phases of Theta knowledge, and participation in college activities. To realize that, six days after pledging, through their own initiative and Diann's counseling, a Theta float appeared in the Homecoming parade. Theta's sixteen pledges entertained for all pledge groups on campus, according to custom. Not being handicapped with the lack of a lodge, a lovely and gracious formal was given at Art Hall in December. Later a Theta basketball team competed with other chapter teams. All this assures us that Gamma Lambda is firmly established at Beloit college in one semester. At the inspiring installation, Diann and all present had the satisfying experience of initiating the charter group . . . one and all. It's a record we are proud of, and

to top it off, Theta pledges ranked first scholastically among fraternity pledges.

GERTRUDE COLLINS LEVIS, Alumna Colonizer.

### From Installer Chairman

Behind installation lies an inspiring story of enthusiastic and untiring efforts on the part of persistent undergraduates and loyal alumnae.

To be named installer chairman seemed flattering and not too difficult, for Theta was already firmly established at Beloit, we thought. It was not until I had received a letter from Helen Sackett asking me if I had arranged for several things—fourteen to be exact—that I realized the need to get busy. First I read the *Installation manual*, and was a bit awed at the mass of detail required to establish a chapter. After the fourteen questions were answered, however, the rest was easy.

1. Banquet chairmen? Of course, I knew immediately that Dorothy Frick, Alpha Chi, Ruth Ward Boswell, Tau, and Theora Teft Loop, Psi, would plan a banquet to thrill us. They did—at Hilton hotel in Beloit, with one hundred guests.

2. Whom did I have in mind for toastmistress? Only one, Dr Abbie Findlay Potts, professor of English literature at Rockford college, who gave us scholarly and witty reminders of the privilege of being college women, and also members of a sisterhood such as Kappa Alpha Theta. As she cleverly discussed the founding which starts a building and the founding which shapes and stamps metal, she named our founders as our builders and Diann DeWeese as the finely minted gold coin of our contemporary college life. Diann extended a Theta welcome to the new members, to which Virginia Irgins responded. Grand vice-president, Laura Louise McCutchan gave a brilliant picture of the love and congratulations poured all around us at this time from friends and Thetas elsewhere. Gertrude Collins Levis, Psi, generously replied by asking all who had helped to rise and take a bow with her. Our guest speaker, Dr Croneis, followed with a warm greeting to Kappa Alpha Theta from Beloit College. A loving club toast from Margaret Banta ended the speech making in an inimitable way with anecdotes which went straight to the heart.

3. Anne Young Clobes, Alpha Chi, prepare lunch Saturday noon for forty girls who will be setting up paraphernalia so not have time to go



CHARTER PRESENT

out for lunch. (Guests were pleased to cups of coffee received. Anne was a Hilton, Beta Gamma

4. Handle finance the able chapter treasurer and ordered badge

5. Greetings? Set at Beloit, in care of Diann should go for

6. Arrange for party that Paddy Schmitz job. She did.

7. Music for initiation Betty Marshall, Tau

8. Chairmen for tion for 450 guests we introduced Theta and friends of Beloit Callie Hilton plan and ease. The rest their efforts. They Stockberger Obenshquist, Beta Rho, c alumnae club and

9. Reservations? Levis, Psi, able, alonizer, who prepare officers were guest delegates and friends homes of Beloit Croneis also assisted two former Grand Mrs Banta, were g

s ranked first scholastic degrees.  
 IS, Alumna Colonizer.

### r Chairman

s an inspiring story of efforts on the part of and loyal alumnae. Her chairman seemed difficult, for Theta was at Beloit, we thought. I received a letter from if I had arranged for to be exact—that I was a bit awed at the to establish a chapter. Questions were answered, sy.

Of course, I knew im- Frick, Alpha Chi, Ruth Theora Teft Loop, Psi, o thrill us. They did— it, with one hundred

in mind for toastmist- bie Findlay Potts, pro- re at Rockford college, and witty reminders of ollege women, and also l such as Kappa Alpha discussed the founding and the founding which , she named our found- Diann DeWeese as the i of our contemporary nded a Theta welcome , which Virginia Irgins president, Laura Louise iant picture of the love red all around us at this Thetas elsewhere. Ger- , generously replied by ped to rise and take a st speaker, Dr Croneis, reeting to Kappa Alpha ge. A loving club toast ded the speech making h anecdotes which went

es, Alpha Chi, prepare : forty girls who will be : so not have time to go



CHARTER PRESENTED BY MRS GRIMM, AS MRS GRASSET, MRS BANTA, AND DIANN DEWEESE LOOK ON

out for lunch. (Guests from all visiting chapters were pleased to find hot hamburgers and cups of coffee ready for them when they arrived. Anne was assisted by Caroline Albers Hilton, Beta Gamma.)

4. Handle finance? Betty Duncan had been the able chapter treasurer, so she collected fees and ordered badges.

5. Greetings? Send them to the new chapter at Beloit, in care of Diann DeWeese; indeed to Diann should go far more than greetings.

6. Arrange for publicity? It was understood that Paddy Schmitz, Psi would ably handle that job. She did.

7. Music for initiation? It was provided by Betty Marshall, Tau.

8. Chairmen for the tea? It was a large function for 450 guests Sunday afternoon. At the tea we introduced Theta to faculty, trustees, students and friends of Beloit college. Anne Clobes and Callie Hilton planned the tea with assurance and ease. The rest of us sat back and enjoyed their efforts. They were assisted by Ernestine Stockberger Obenshain, Psi, Beth Welsh Holmquist, Beta Rho, other members of Rockford alumnae club and Beloit alumnae.

9. Reservations? That pointed to Gertrude Levis, Psi, able, alert, and untiring alumna colonizer, who prepared the invitation lists. Grand officers were guests at Hilton hotel, visiting delegates and friends were accommodated in the homes of Beloit and Rockford alumnae. Mrs Croneis also assisted us in entertaining visitors, two former Grand presidents, Mrs Grasset and Mrs Banta, were guests in her home. Marjorie

Boesh Merrick, Psi, newly appointed president of District X, and Marguerite Strange Tuttle, Upsilon, were weekend guests from Minneapolis and St. Paul at the home of Betty Stuckey Schmitz, Psi. Jane Smith Marlowe, Tau, and Lois Brearly assisted Gertrude with all this work.

10-14. Initiation details: Diann DeWeese, Gamma; Marion Swanstrom, and Betty Duncan, Alpha Chi; Bea Overbye and Paddy Schmitz, Psi; Kemi Eisner, Lois Blue Brearly and Barbara Atkinson Bradley, Delta; Betty Nees Moore, Tau, shared in filling assignments of the last six questions.

I wish everyone might have taken part in the toast to Gamma Lambda and to Diann. It was a real inspiration to see the enthusiasm of these Thetas who had traveled far to honor Diann's semester of work. Friday evening, a reunion with alumnae took place at the Theta lounge in Maurer hall on campus, where we introduced the chapter group. Diann also conducted pledge service for two new pledges, Delores Tyson, Chicago, and Nancy Copus, Beloit. Enthusiastic Beloit alumnae were hostesses to a group of seventy-five guests, and over the punch bowl with Theta songs filling the air, a week-end of delightful experiences began. Louise Connor Teague, Charlotte Ray Adams, Mary Boggs, and Betty Moore, all of Beloit, were responsible for this affair.

Mrs. Croneis graciously made the stay in Beloit doubly attractive to our guests, entertaining 32 of us at a luncheon on Saturday noon preceding initiation. Her guests were national



officers, pledges, initiates, and other visiting dignitaries. We feel very close to Mrs Croneis, and deeply indebted to her for helpful guidance.

The scene at initiation was heart-warming. Ingersoll house was filled to capacity; guests numbered 125, from many chapters and states. The ritual, impressive in itself, gained beauty from those who conducted it so movingly and with such memorable dignity: Virginia Lauderdale Grimm and Pauline Brannock Moore.

Floral greetings were received from many friends and organizations at Beloit. Praise and welcome was the order of the week-end. Kappa Alpha Theta is installed at Beloit college, thanks to so many willing workers.

BERNICE LONG KIEFER, Installer chairman

### As Others Saw Them

As delegate from Alpha Psi chapter at Lawrence college, I enjoyed every minute of the initiation and installation of Theta's newest chapter, Gamma Lambda.

The friendly and enthusiastic spirit with which I was greeted was an indication of what was ahead. The events of the next two days far surpassed my expectations.

Meeting alumnae and grand officers, colonizers and pledges at open house Friday, attending initiation and banquet Saturday; and going to the tea Sunday afternoon, I had an opportunity to know what a grand group of girls Theta was acquiring.

The colonizers and 14 initiates are wonderful Thetas and make those of us who met them, better Thetas. Their enthusiastic spirit, high standards and the beauty of the installation ... all was inspiring.

JEAN WATT, *Alpha Psi*

### Gamma Lambda Thoughts

A rosy pink cloud is beautifully romantic, but certainly not at all practical for speedy dressing. Outside, cars were waiting to take us to Ingersoll house.

At first we were noisily excited but as we stepped inside Ingersoll, the quiet so often present with expectancy surrounded us all. Four hours later we had all received our badges. The intervening time was one of which we shall never lose sight. At the end, there was a chaotic confusion of faces and friendly congratulations. I can remember little of what was said.

We then left for Hotel Hilton and the in-

stallation banquet for then we were all members of Kappa Alpha Theta but we still had to make Gamma Lambda chapter official. The hall where the banquet was to be looked beautiful. There were corsages and recognition pins for each of us. The center of each table had a bouquet in which black and gold pansies floated. The Hilton echoed and re-echoed with Theta songs, as each chapter represented sang. Harmonies were varied and melodies slightly different, but such irregularities only added to the fun. Toastmistress was Dr Potts, and her speech as well as those of the others was excellent and will be remembered by us all. Some of us thought that Dr Croneis would feel rather out of place in the feminine world in which he was, but on the contrary, he was very much at home.

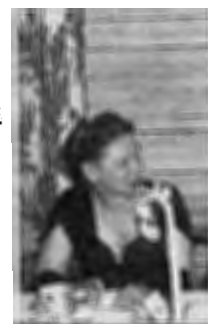
After the speeches, the newest chapter, Gamma Lambda, was installed. It was thrilling to see the Gamma Lambda link added to the chain of Theta chapters and then finally, to have Virginia, as our representative, receive the official charter. After the banquet, we left for home. Some of us just talked, some of us sang songs we had learned at the banquet, some of us went to homes of alumnae or to wherever guest delegates were staying. All of us however, went to sleep with kites pinned to our night clothes.

### As We Saw It

There are cold nosed Thetas far northward in Toronto and there are brown-as-a-berry ones on the southernmost tip of Florida. There are old tradition Thetas in Greencastle and some just forming traditions in Lexington, Kentucky. Each one works for her chapter, each one considers herself fortunate to be a Theta; but we, as Gamma Lambda's fourteen first actives, consider ourselves to be about the fourteen luckiest Thetas in America. It certainly is seldom that one is able to see fraternity work as we saw it on installation week-end.

One tries hard to find sufficient adjectives to tell of a happening; we can think of it only as a time spent sailing on a pink cloud, half-way between the earth and the world above.

Friday night was our "get acquainted and try to remember names" open house. Seeing and meeting the people we did at that time was like having our pledge lessons suddenly come to life. The Grand president, the Grand vice-president, people whose names we had learned to spell, positions of which we had learned the purpose,



Mrs. I



Mrs. I

## Kappa Alpha Theta

When we were all members but we still had to have a chapter official. The hall had to be looked beautiful. Recognition pins for each table had a bouquet of gold pansies floated. The room was re-echoed with Theta songs. Harp represented sang. Harmonies slightly different only added to the Dr Potts, and her speech was excellent and all. Some of us thought we feel rather out of place in which he was, but on so much at home.

The newest chapter, stalled. It was thrilling to have a link added to the and then finally, to have a representative, receive the official letter, we left for home. Some of us sang songs in quiet, some of us went out to wherever guest All of us however, went to our night clothes.

## Saw It

Theta far northward the brown-as-a-berry ones of Florida. There are in Greencastle and some in Lexington, Kentucky. Each chapter, each one content to be a Theta; but we, fourteen first actives, content the fourteen luckiest certainly is seldom that unity work as we saw it.

and sufficient adjectives to can think of it only as a pink cloud, half-way the world above.

"get acquainted and try open house. Seeing and did at that time was like us suddenly come to life. The Grand vice-president, we had learned to spell, had learned the purpose,

## Banquet Glimpses



*Diann DeWeese, Mrs Grimm, Dr Potts, Dr Croneis, Virginia Irgens*



*Mrs McGranahan, Mrs Croneis, Dorothy Frick, Mrs Moore, Eva Hall, Mrs Banta*



*Mrs McCuichan, Mrs Lewis, Mrs Bauer, Dean Stanton, Mrs DeWeese, Mrs Kiefer*

but people we had certainly never hoped to actually meet. Four past Grand presidents in one room! It was unbelievable. Do you wonder about a rosy pink cloud?

Saturday there was a luncheon for us at the home of Dr. Croneis, President of Beloit college. After lunch we had fifteen minutes to dress in our white formals for initiation.

On Sunday a tea was given at Art hall. Music was supplied by a delightful trio; and several hundred people attended the tea. By this time, most of us felt that it was our debut.

All of us appeared Monday morning wearing our colors. Gold skirts and black sweaters showed everyone how proud we were of our badges. As we saw it, installation week-end was a wonderful happening. I think none of us really came down to earth until our Tuesday

classes. The pink cloud had vanished, but two new little puffs, in the form of our new pledges, were just beginning to form.

BARBARA GREYER AND CAROLYN LOVE

### Who's Who in Gamma Lambda

Patricia Bannen, social chairman: "Terrific Pat" is a great girl, who will make all our social functions successful.

Louise Collins: "Dear Lou," how we all love her, even though she always keeps us waiting. She sings blues like a professional. When she appears in a play she brings the house down.

Diann DeWeese, president and colonizer: "Versatile Diann" has done a wonderful job. We are amazed any one can do so many things well.

Virginia Edwards, rush chairman: "Viva-

cious Gina" lives in as often as we wish constant prattle.

Gail Enslow: "and always must write and likes to write and

Dorothy Goll, never loses track money rolling into

Barbara Grever, is absent minded, I She, too, is an actress

Joan Hohmann: member of the chapter Sigma Chi occupies she doesn't mind

Virginia Irgens: as a deer and has artist and a lover of

Corrinne Keatin lets us forget her sing torch songs in can play the drum

Doris Lanum: makes our heads infectious laugh.

Joan Lindemer:

Most important to shortage problem should make it his in solving these problems conscientiously as war.

Those who have sion by high salaries sider and again to

What is more i youth by qualified some sections of being manned by were taught by to

"UNESCO good will other." Its of the psychological barriers the creating a posed International and natural



GAMMA LAMBDA ADVISORY BOARD: Gertrude Lewis, Patricia Schmitz, Lois Brearly, Betty Duncan, Marion Swanstrom, Kemi Eisner. Pledge Nancy Copus, active Virginia Edwards, alumnae Betty Moore, Charlotte Adams, Louise Teague, and Mary Boggs.



had vanished, but two  
m of our new pledges,  
orm.

ND CAROLYN LOVE

### Gamma Lambda

d chairman: "Terrific  
will make all our so-

Lou," how we all love  
ways keeps us waiting.  
rofessional. When she  
rings the house down.  
sident and colonizer:  
lone a wonderful job.  
can do so many things

ish chairman: "Viva-



ly, Betty Duncan, Marion

lams, Louise Teague, and

cious Gina" lives in town, so we do not see her  
as often as we wish. We love to listen to her  
constant prattle.

Gail Enslow: "Naive Gail" never hurries,  
and always must we remind her of things. She  
likes to write and has a subtle sense of humor.

Dorothy Goll, treasurer: "Efficient Dot"  
never loses track of a penny and keeps the  
money rolling into the treasury.

Barbara Grever, editor: "Sweet Bobbie," who  
is absent minded, but does things in a big way.  
She, too, is an actress.

Joan Hohmann: "Stunning Jo," first mem-  
ber of the chapter to take a fraternity badge.  
Sigma Chi occupies much of her time, which  
she doesn't mind at all.

Virginia Irgens: "Shy Ginny" is as graceful  
as a deer and has beautiful red hair. She is an  
artist and a lover of good music.

Corrinne Keating: "Laughing Connie" never  
lets us forget her Indiana drawl. She loves to  
sing torch songs in the bathtub, and claims she  
can play the drums.

Doris Lanum: "Active Dori" is so busy it  
makes our heads swim, liked by all, she has an  
infectious laugh.

Joan Lindemer: "Beautiful Jo" has lovely

blonde hair, is efficient and a diplomat.

Carolyn Love: "Generous Carolyn" always  
willing to help with our problems, a terrific  
basketball player, though she doesn't look ath-  
letic.

Elizabeth Owens: "Lovable Betsy" leads song  
practice with a voice like a lark. Her smile ra-  
diates happiness.

Dorothea Vaughan: "Quiet Dee" can't sing  
on pitch, but tries hard. She plans to design  
clothes, and we know she can.



NANCY COPUS AND DELORES TYSON, PLEDGES OF  
GAMMA LAMBDA AT BELOIT

## Educating Our Youth

Most important today are the teacher salary and  
shortage problems. Every educated person  
should make it his or her responsibility to aid  
in solving these problems—just as sincerely and  
conscientiously as he or she helped during the  
war.

Those who have been lured from the profes-  
sion by high salaries should at this time recon-  
sider and again take a teaching position.

What is more important than educating our  
youth by qualified and educated teachers? In  
some sections of the country our schools are  
being manned by high school graduates who  
were taught by teachers who held emergency

certificates.

If those who possess college degrees would  
assume the responsibility of teaching our youth,  
and if necessary register for advanced work dur-  
ing 1947 summer schools, it would be a great  
step in alleviating the teacher shortage.

One does not need a Phi Beta Kappa key to  
be a good teacher, as some believe, but deter-  
mination and a conscientious desire to do what  
is right. Today married teachers are welcomed  
by school boards who are realizing that age and  
experience are needed for effective teaching.

WILLIAMMA FARNHAM KLIPPINGER, *Delta '31*

"UNESCO'S goal is to help build peace on earth through building the kind of  
good will among men that springs from a true and steady understanding of each  
other." Its program includes: "World-wide attack on problem of illiteracy; Study  
of the psychological and social tensions that lead to war; Efforts to reduce the  
barriers that obstruct free flow of communications between peoples; Possibility of  
creating a world-wide broadcasting network, under international auspices; A pro-  
posed International institute of the Amazon, to study the problem of food, disease,  
and natural resources of tropical areas, the center of world wide backwardness."