

New College Chapters

"Watch later issues for a continuation of the story of colonization." That was the sentence with which the story in the November issue ended. So here is the news at hand when the last possible day arrived for copy to go to press.

At George Washington University

"KAPPA ALPHA THETA announces the establishment of Gamma Kappa chapter at George Washington university, Washington, District of Columbia, November 10, 1946." So reads the widely distributed installation card.

Some way, some how, neither pictures nor copy on the installaton, or of the new chapter's present activities succeeded in making the air or train trip between Washington and Ithaca. So, what follows is just random notes picked up from personal letters, other chapters' letters, and an incidental contact with "one who was there."

The advance program read: November 9: 1 P.M.—Initiation of charter members at Gamma Kappa apartment, 2121 G. street, N.W. 7 P.M.—Banquet and charter service, Sapphire room, Mayflower hotel. November 10: 11 A.M.—First Gamma Kappa chapter meeting, followed by buffet luncheon for its members and the installing officers. 4 P.M.—Reception and tea at Washington club house.

"This program was carried out successfully and in Grand style by the installing officers," so it is reported. Those officers were—Mrs Grimm, Grand president, Mrs Wilson, president of District VII, and Mrs Higbie, former Grand president. They were ably assisted by members of Washington alumnae chapter, delegates from every college chapter in District VII, and by two delegates, Gloria Harrington and Iris Cooper, from District IV's newest chapter, Gamma Eta at Massachusetts State college.

Since installation, Gamma Kappa has one additional pledge, Janet Glissen, president of the campus dramatic club, Cue and curtain. It has also had a dessert party honoring the Theta alumnae who helped it during rush; and has entertained Thetas from Beta Lambda chapter who were in the city for a football week-end.

Furnishings (on order since last summer) didn't arrive before installation, so Washington Thetas graciously loaned furnishings from their

own homes to make the apartment attractive and usable for installation events. One by one as the chapter's purchases arrive, the alumnae loans are being returned.

A great many Thetas from neighboring chapters and states attended, and enjoyed installation events. Many student, faculty, and city friends were present at the installation tea.

And here ends the grape-vine routed news. Maybe by the next issue the magazine can at least announce the names of Gamma Kappa charter members.

At the University of Maryland

The latest news is that the temporary chapter house is still "under construction." But pledge training is well advanced. A third Theta on campus, Barbara Hudson, Alpha Chi, is co-operating with coorganizers, Jean Ford, Beta Phi and Sally Reed, Alpha Rho, in directing the group of fourteen pledges. The girls are happily finding their place in campus activities. Everyone is studying diligently, so every pledge may become a charter member February 15.

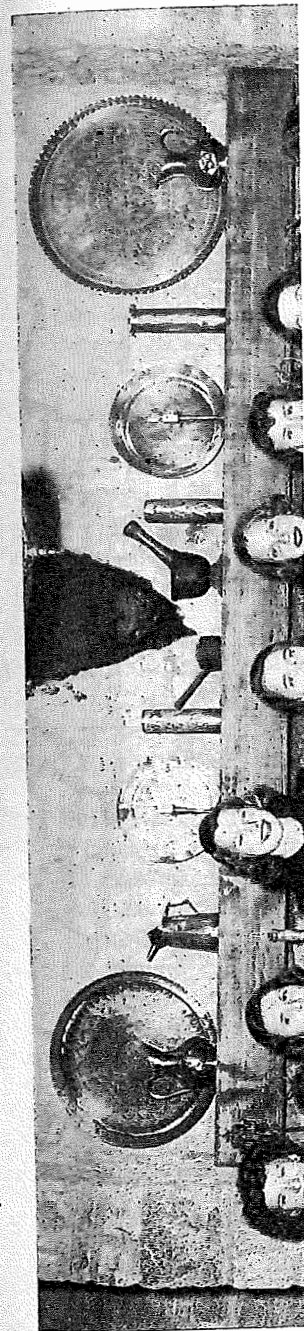
Yes, February 15, is the date of their installation and the place is—District VII's convention at Haddon Hall, Atlantic city, New Jersey.

So far as this reporter knows, this will be the first time a District convention has had the privilege and opportunity to be in the installing team for a new chapter. Lucky District VII! And lucky Maryland group to have its fraternity introduction include a convention experience!

And Now to Beloit College

Rush was about to begin in the November issue report. Rush was most successful.

Rockford alumnae club planned and steered events, aided by alumnae from other towns near the college. The Grand president, Mrs Grimm, was at some of the parties. Psi and Tau undergraduates went to help with every party, and Alpha Psi, though farther away helped at some of the events.



Four Seasons

Or—The History of Gamma Kappa Chapter at George Washington University

Betty Lockridge Hogate and Mary Day Kavanagh, Washington alumnæ

Spring Planting

Eight lonely little Thetas on the George Washington campus were the incentive to investigate the possibilities of colonizing there. It also was believed that in a city as important as Washington, Theta should be represented. This university is unique in that it is the only university in the United States that has been chartered by Congress. The college is nearly a hundred years old. Although George Washington himself dreamed of establishing a college in the Nation's Capital, his ambition was not realized until fifty years after his death.

In the fall of 1945, Emma Mae Vickrey (Kappa, Kansas), president of Washington alumnæ, appointed a committee to investigate and report on the desirability of colonization at George Washington. Committee members were: Betty Hogate (Alpha, DePauw) chairman, Mary Parker (Alpha Lambda, Washington) Eda Brewer (Gamma, Butler) Genevieve Forbes Herrick (Tau, Northwestern) Marjorie Binford Woods (Alpha, DePauw) Gertude Healy Shorb (Alpha Pi, North Dakota) Myrna Bushmeyer (Omicron, Southern California) Lula Shinkle Brandt (Beta Epsilon, Oregon State) Dorothy Flood (Beta Delta, Arizona) and Virginia Miller (Alpha Theta, Texas).

The first step was to interview university officials and gather all information we could about the university. Dr. Marvin, president, was anxious to have a chapter of Kappa Alpha Theta on the campus. Twelve national women's fraternities had chapters there, yet there was ample room for more as enrollment continued to increase. Dr. Marvin invited Washington alumnæ chapter to hold its next meeting in one of the university halls. We did this in October. He made an interesting talk, which was followed by a question period. Tea and sandwiches were served. District president, Mrs. Harrison Wilson, attended this meeting. She, and the majority of alumnæ present were convinced that we should colonize as soon as possible.

Now our problem was to sell the idea to Kappa Alpha Theta. Mrs. Higbie, then Grand president, came to Washington and interviewed university officials, talked to Thetas on campus, and to alumnæ. She left with the firm conviction that we should have a chapter in Washington.

Grand council met soon after this, and discussed the proposal. They agreed that it was a desirable possibility. Nothing further could be done until Grand convention authorized action.

Meantime, Washington alumnæ began looking up students there who might make good Theta pledges, just in case! Miss Virginia Kirkbride, Director of Women's activities at George Washington, gave us the names of girls who had entered in the spring term, but could not be rushed because quotas were filled. Mrs. Hogate opened her home for a rush tea, to which seven of these girls were invited. Miss Kirkbride and Miss Myra Sedgwick, Executive secretary of the university, also came to the party. These two women were an invaluable aid to us all through colonization. From these original seven rushees we later selected four girls. Three other parties were given before June: a swimming party and dinner at the Congressional Country club; a tea at the Washington club; and a dinner at the home of Mrs. Lucas, aunt of an alumna. When convention met in June, we had five girls who were thrilled to think they might become Kappa Alpha Theta pledges.

Word came that Convention had approved colonization at George Washington University. Several of our rushees were leaving for the summer. They wanted some insignia to show that they were Theta pledges. We had a ceremony, and the girls went proudly on their way.

Summer Bloom

According to Panhellenic rules, each George Washington chapter might give four rush parties during the summer. Mary Parker was Theta's capable party chairman. Two formal

teas were given, one at dignified old Quarters 6 at the Army War college, facing on the Potomac, the home of Mary Clippinger Scott (Alpha, DePauw) and her husband, Brig.-Gen. Stanley L. Scott, and one at the home of Mary Quayle Bradley (Alpha Mu, Missouri) wife of Gen. Omar Bradley, at Ft. Meyer, the army post that adjoins Arlington National cemetery. An all-day picnic at a Duck club down the Potomac proved to be a lot of fun, as was a formal evening party at the beautiful Spring Valley home of Gertrude Healy Shorb (Alpha Pi, North Dakota). This was a plantation party that William and Mary Theta chapter had featured so successfully, with the house hung with Spanish moss and a true old southern atmosphere reproduced. William and Mary Thetas put on some clever stunts.

Washington resident undergraduate Thetas, home for the summer, were a tremendous help in summer rushing, and also in the early fall rush. In fact, we couldn't have gotten along without them.

Late in the summer, we had a formal pledging for seven girls: Jean Oswald, Virginia Warren, Rosemary Glenn, Mary Dickey, Roberta Bryant, Bobby White and Betty Weethe.

We were now ready to start the college year. On the campus, only one Theta was left, Jean LeFevre, from Randolph-Macon. Of the eight Thetas there, 1945-46, one had graduated, and the other six had either transferred or married.

The fraternity sent as colonizers, Leslie Metheny (Rho, Nebraska), and Lynn Matteson (Alpha Rho, South Dakota).

When college opened in September 1946, Mrs. Shorb, Theta's talented House chairman, had secured for Theta a desirable suite of rooms, right next to the Fire station! at 2121 G St. N.W. just two doors away from another building filled with George Washington fraternity chapter suites. The Theta apartment includes living room, sunroom study, bath, and kitchen. When rush started, no furniture had arrived, but the rooms were used anyway, outfitted with alumnæ loans of silver, dishes, pictures, and furniture. Painters, carpenters, electricians and rushees mingled happily. It was at least *different*, and rushees could hardly confuse Kappa Alpha Theta with any other group! Younger alumnæ came to as many parties as possible, a few older alumnæ were invited. Elizabeth Crouse (Gamma Deuteron, Ohio Wesleyan) and Margaret Matthews (Beta Pi, Michigan State) provided wonderful food, and with our three actives, seven pledges, and lots of hard work, we lived through rush. One picture will always linger in our memories: Eda Boos Brewer (Gamma, Butler) washing dishes in a silver pitcher over a cake of ice, because there was no place to put the ice but in the sink!

More than 250 girls signed for rush, all of whom were required to visit every chapter dur-

ing open house. The rooms, and then into three outstanding parties on the S.S. *Theta*, when to a ship's deck; a favors were tiny covers, in 1870 costume in *Kappa Alpha Theta* spirit of Theta, at Founders appeared.

All this sound force, strength, and to for we pledged to brought the Theta to the rejoicing on pl

F

As if this weren't council and Washington early installation, preparations started Kavanagh (Tau, N Chairman of installation began flying back office and Washington

Pearl Higbie, V Wilson arrived. New men were initiated at a formal and grand room of Washington that evening. Reb Banquet chairman, in mounds of yellow lands of southern wore corsages of new Theta kites. *Washington Post* beautiful, and gay audience by introducing woman who had 1 ters, and two husbands loved the speeches.

On Sunday conducted a model was followed by rooms, prepared purveyors of d Matthews.

At 4 in the afternoon its pledges were hellenic, George



"THE OLD STAGE HANDS"—WASHINGTON ALUMNÆ'S CHAIRMEN OF COLONIZATION. REBECCA NOLAND RYAN, BETTY LOCKRIDGE HOGATE, GERTRUDE HEALY SHORB, EMMA MAE RUMMEL VICKREY, MARY WORSHAM PARKER, MARY DAY KAVANAGH, LULA MAY BRANDT.

colonizers, Leslie Metheny
Lynn Matteson (Alpha

ed in September 1946,
alented House chairman,
ta a desirable suite of
he Fire station! at 2121
loors away from another
orge Washington frater-
he Theta apartment in-
nroom study, bath, and
arted, no furniture had
were used anyway, out-
is of silver, dishes, pic-
ainters, carpenters, elec-
gled happily. It was at
es could hardly confuse
with any other group!

to as many parties as
alumnæ were invited.
nma Deuteron, Ohio
et Matthews (Beta Pi,
d wonderful food, and
even pledges, and lots
through rush. One pic-
in our memories: Eda
butler) washing dishes
a cake of ice, because
ut the ice but in the

igned for rush, all of
isit every chapter dur-



N. REBECCA NOLAND
REY, MARY WORSHAM

ing open house. They poured through the Theta rooms, and then intensive rush started. We gave three outstanding parties: a nautical party on the S.S. *Theta*, when our rooms were converted to a ship's deck; a pioneer party, where the favors were tiny covered wagons and Mrs. Vickrey, in 1870 costume, instructed in *Sixty Years in Kappa Alpha Theta*; and the last party, The spirit of Theta, at which the ghosts of our Founders appeared.

All this sound freshman education in Theta age, strength, and tradition paid rich dividends, for we pledged twenty-four fine girls. This brought the Theta chapter up to 33. Great was the rejoicing on pledge night!

Fall Fruits

As if this weren't enough excitement, Grand council and Washington alumnæ decided on an early installation, November 9-10, and feverish preparations started all over again. Mary Day Kavanagh (Tau, Northwestern) was appointed Chairman of installation. Letters and supplies began flying back and forth between Central office and Washington.

Pearl Higbie, Virginia Grimm, and Lillian Wilson arrived November 7. Nine upperclassmen were initiated November 9, and were feted at a formal and gala banquet in the Sapphire room of Washington's famous Mayflower hotel that evening. Rebecca Ryan (Gamma, Butler) Banquet chairman, saw that tables were decked in mounds of yellow chrysanthemums and garlands of southern smilax, that the new initiates wore corsages of yellow roses over their bright new Theta kites. Marjorie Binford Woods, *Washington Post* society editor, made a blonde, beautiful, and gay toastmistress, electrifying the audience by introducing Virginia Grimm as the woman who had two grand pianos, two daughters, and two husbands! Installation service followed the speechmaking.

On Sunday morning, national officers conducted a model meeting for the chapter. This was followed by a buffet luncheon in the Theta rooms, prepared and served by those faithful purveyors of delectable food, Crouse and Matthews.

At 4 in the afternoon, the new chapter and its pledges were presented to Washington Panhellenic, George Washington faculty, and cam-

pus men's and women's fraternity chapters, at a tea in the lovely old drawing room of the Washington club. The room was alight with candles, banked in masses of garden chrysanthemums purchased by Nettie McReynolds (Tau, Northwestern) at an outdoor market at 7 A.M. the preceding morning! Receiving line and assisting hostesses were picturesque in long dresses. People came in droves, and *stayed*. The young men, in particular, stayed, entranced with the charming new Thetas. Peyton Hawes Dunn (Alpha Iota, Washington-St Louis) managed this beautiful party.

Winter Bedding Down

And so—after over a year's work, Gamma Kappa was really established and installed. We of Washington alumnæ feel that colonization had been wise. Theta has a fine new chapter, which compares favorably with other Theta chapters and with other groups at George Washington.

Washington alumnæ, a somewhat loosely knit and transient organization, profited by working together with a common purpose, establishing new friendships and strengthening old ones, acquiring a new interest in college women and their training, becoming informed about and eager to improve their city university.

The magnificent help from nearby college chapters and the congratulatory messages that poured in from all over the country, even Honolulu and Canada, made all feel that we are a part of a real sisterhood.

But, Colonization has its pitfalls, too. It means acquiring an entire group untrained in Theta customs or business methods, unused, even, to working together as a group. Except for enthusiasm, you start from scratch. A strong Advisory board is essential as a carry over after installation, and will be invaluable for an entire college generation. Otherwise, a new group might never be welded into a strong and efficient chapter.

Another danger is that alumnæ who have worked so hard to build up a group from the beginning may become too attached to it, and not be willing to see the girls mature, able to stand on their own feet and make their own decisions. Alumnæ handling a colonized group need to be wise mothers!



GAMMA KAPPA CHARTER MEMBERS: MARY DICKEY, JOAN GARWOOD, VIRGINIA WARREN, ROBERTA BRYANT, JEAN OSWALD, GWEN LOOMIS, BETTY WEETHEE, BOBBY WHITE, ROSEMARY GLENN.

Who's Who

By Leslie Metheny

LOVELY, blond Roberta Bryant, junior, is our capable candidate for yearbook beauty queen. The results are yet to be announced, but it is the common consensus of opinion that our confidence has been well placed.

Jean LeFevre and Joan Garwood have upheld Theta's name with all their vim, vigor, and vitality in all Panhellenic meetings. Jean, and pledge, Janet Glisson, were two of the five attendants to our Home-coming queen last fall. It was the first campus victory for Theta since rush week, and you can imagine our excitement to ring the bell with two campus beauties.

Rosemary Glenn came through for Theta when she was elected president of Women's Dormitory council, to which Lynn Matteson was elected as a representative, also. Rosemary is also a member of Tassels, sophomore group for women selected by Mortar board.

Betty Weethee who was elected last spring as "The Girl the Boys Most Wanted to Come Home to," is working now as secretary to the

Equadorian Ambassador, and in her spare time is an English instructor.

Gwen Loomis, another charter member, is a great activity girl, and will be seen daily dividing her time between innumerable meetings.

Here are all our names and Home towns. Thetas, who transferred to George Washington University: Jean LeFevre, Beta Beta, Marilyn Matteson, Alpha Rho, Leslie Metheny, Rho.

Charter members: from Virginia: Virginia Warren and Betty Weethee, Arlington; Roberta Bryant, Roseland; Mary Dickie, Baltimore, Maryland; Rosemary Glenn, Upper Montclair, New Jersey; and from Washington, Gwen Loomis, Jean Oswald, Barbara White and Joan Garwood.

PLEDGES: From Maryland: Nancy June Allen, Bethesda; Marcia Roessing, Landover Hills; from Virginia: Barbara Armstrong, Alexandria; Juanita Duval, Park Fairfax; Janet Glisson, Falls Church; Anne Greer, Fairlington; Amelia McNally, Marjorie Tichenor, Arlington; from Pennsylvania: Jean Schick, Bucks County; and from Washington, D.C. Sally Ann Evans, Almaria Head, Charlene Johnson, Elizabeth King, Bing Lind, Nancy Lipscomb, Jane Merwin, Mary Norwood, Mary Squires, Carol Stout, Myra Nan Toel.

GAMMA

"INITIATION" and "inst that became familiar to u and fall of 1946. Finally we were to experience th meaning. What lucky Tl to hear Mrs Grimm and the lovely words that are heart. Our initiation was were members of Washi who had worked so har- sible, present, but als council and delegates fr VII, and beyond.

The nine new initiat could hardly drag them loving congratulations home and dress for t banquet that was to room of the Mayflowe

With the lighting honor of Bettie Locke Brant, Bettie Tipton Fitch Shaw, Mrs. Vid banquet. All guests en gay conversation and in the book. After the jorie Binford Woods everyone by her pla *rehearsed* introductio children, two pianos, by one she introduce and Mrs Wilson wh of the evening. Th short talks of Leslie Then Mrs Kavanag reading all the won our "new" sisters.

Installation of G officially completed the Charter to the c

By this time, ev there couldn't be a for us—but there : comed rest, Sunday and early to go to This was followed arranged by Miss nice to have a cha officers and delega had come so far to



ARREN, ROBERTA BRYANT,
MARY GLENN.

; and in her spare time
er charter member, is a
will be seen daily divid-
numerable meetings.
nes and Home towns.
to George Washington
e, Beta Beta, Marilyn
eslie Metheny, Rho.
m Virginia: Virginia
ee, Arlington; Roberta
y Dickie, Baltimore,
nn, Upper Montclair,
Washington, Gwen
:bara White and Joan
land: Nancy June Al-
Roessing, Landover
Barbara Armstrong,
, Park Fairfax; Janet
e Greer, Fairlington;
Tichenor, Arlington;
hick, Bucks County;
Sally Ann Evans,
Johnson, Elizabeth
ipscomb, Jane Mer-
Squires, Carol Stout,

Gamma Kappa's Viewpoint

"INITIATION" and "installation" were words that became familiar to us through the summer and fall of 1946. Finally the day arrived when we were to experience their true and wonderful meaning. What lucky Thetas we were, indeed, to hear Mrs Grimm and Mrs Higbie repeating the lovely words that are so dear to every Theta's heart. Our initiation was unique in that not only were members of Washington alumnae chapter, who had worked so hard to make this day possible, present, but also, members of Grand council and delegates from chapters in District VII, and beyond.

The nine new initiates were so excited, they could hardly drag themselves away from all the loving congratulations after initiation, to rush home and dress for the exciting installation banquet that was to follow, at the Sapphire room of the Mayflower hotel.

With the lighting of the four candles in honor of Bettie Locke Hamilton, Alice Allen Brant, Bettie Tipton Lindsey, and Hannah Fitch Shaw, Mrs. Vickrey officially opened the banquet. All guests entertained themselves with gay conversation and almost every Theta song in the book. After the grand dinner, Mrs Marjorie Binford Woods, toastmistress, delighted everyone by her planned speech and her *un-rehearsed* introduction of Mrs Grimm's "two children, two pianos, and two husbands"! One by one she introduced Mrs Grimm, Mrs Higbie, and Mrs Wilson who gave the main speeches of the evening. They were followed by the short talks of Leslie Metheny and Jean Oswald. Then Mrs Kavanagh closed the program by reading all the wonderful "Thetagrams" from our "new" sisters.

Installation of Gamma Kappa chapter was officially completed when Mrs Grimm presented the Charter to the charter members.

By this time, everyone was convinced that there couldn't be any more thrills left in store for us—but there were. After a night of welcomed rest, Sunday morning we were up bright and early to go to our *first* chapter meeting. This was followed by a lovely buffet luncheon arranged by Miss Elizabeth Crouse. It was so nice to have a chance at a real talk with Grand officers and delegates from other chapters who had come so far to be with us for the occasion.

We only wished there could have been many more.

At three in the afternoon we were off again—this time to the Washington club for the tea and reception which introduced Gamma Kappa chapter to The George Washington university faculty, the fraternities on campus, and Washington alumnae Panhellenic association. It was so nice, also, to meet the two coorganizers of the to-be Maryland chapter, and some of its darling pledges.

And so the grand week-end came to an end. We bade farewell to our new Theta sisters with plans to meet them again, soon, in Atlantic City for the District convention and the installation of Gamma Mu. ROSEMARY GLENN

As Others Saw Them

The installation of Gamma Kappa was the *first* installation that we were privileged to attend. After our long trip down from Amherst, it was thrilling to meet so many wonderful Thetas. The new chapter calls for superlatives and so do the installation ceremonies. The Theta rooms are lovely and the girls in Washington are fortunate to have as neighbor such an enthusiastic alumnae chapter. We are the baby chapter of District IV and know how welcome alumnae assistance can be.

Our deepest expectations of Theta were fulfilled at the installation ceremonies at the Hotel Mayflower. The banquet room was filled with Thetas from everywhere. Telegrams and notes of congratulations made us realize how deep the bonds of Thetahood are. We enjoyed meeting the Grand officers of whom we had heard so much. Needless to say, they surpassed our anticipation.

The reception at the Washington club was a delightful climax to our week-end. Theta was certainly extended a warm welcome to the George Washington campus. They seemed pleased to have a Theta chapter there but were no happier than were we. The new chapter has made a wonderful beginning in Washington. We two Massachusetts delegates and our chapter, Gamma Eta, join the rest of Kappa Alpha Theta in wishing Gamma Kappa continuous success.



GRAND PRESIDENT VIRGINIA GRIMM PRESENTS GAMMA KAPPA'S CHARTER TO ROSEMARY GLENN

GAMMA KAPPA'S THETA TRIO: LESLIE METHENY, Rho, colonizer; MARILYN MATTISON, Alpha Rho, co-colonizer; JEAN LEFEVRE, Beta Beta

Sight-seeing Tour

AS WE APPROACH our National Capital, we see the wide, serene streets bordered with rich shrubs, tall trees, beautiful parks, and exquisite white marble buildings.

We drive down Pennsylvania avenue, one of Washington's busiest thoroughfares, passing the White House and the State department, and turn left at 22d street. Only two blocks away from Pennsylvania avenue, we find ourselves in the middle of the campus of one of America's fastest growing universities, George Washington. At the corner of 22d and G streets our attention is drawn to the right where the peaceful scene changes to one of chaos and confusion. In fact, even Pennsylvania avenue would seem quiet compared to this.

An innocent bystander tells us that this is a group of girls who were charter members of a new group and that this enthusiasm is a result of an extremely successful rush season, climaxed by the near completion of their apartment.

We might as well take a detour from our planned trip of Washington and see how a new chapter gets a successful beginning on a campus where a number of chapters are already firmly established, but a campus where life seems to revolve around fraternity life.

One of the merry-makers tells us that Gamma Kappa chapter of Kappa Alpha Theta started with ten charter members, entered rush season with bare rooms, but with the help of alumnae, came through it all with 24 fine pledges. She says that the furniture that had been selected had not come in time for rushing. Worse than that Theta practically had to pledge the plumber, painter, and electrician in order to get their apartment somewhat presentable. Several alumnae stripped their homes of tables, chairs, and sofas, which they transferred to the Theta apartment. So, with samples of the material that would eventually bedeck their rooms hanging for display purposes, and with signs reading "mirror will hang here," or "Sofa will be here," the small group went into rushing. In spite of paint cans stacked in the kitchen, and various other inconveniences, the girls came smiling through to greet their guests with *Ring out three cheers for Theta*, and entertained them with grand parties. The last party brought to life the four Founders of the first chapter, who told about the founding in 1870. Each of the ten charter members represents a different type of girl, making up a well-rounded group, pleasing to the original founders.

As we go to view the Theta apartment, now almost complete, we find it difficult to imagine it in the condition the girls described. The kitchen sparkles with a shiny new electric refrigerator and stove, and a new cupboard unit, the gift of Gertrude Heeley Shorb, Housing chairman. The powder room with gay rose and green paper and a fluffy dressing table, has a feminine look and appeal which would be difficult to equal. The large L-shaped chapter room is done in bright scarlet and cool green. The draperies are solid green. To the right as you enter the room is a cozy corner with a scarlet love seat with a long modern coffee table of blond mahogany in front of it and twin tables

Kappa Alpha Theta

of the same wood on either side. The twin tables are a pair of modernistic lamps, fitting into the room. Several solid green sections are in appropriate places, as do several chairs upholstered in a green fabric. A modernistic table sits between two clusters of chairs. The room makes an excellent "charter room" to decorate the luscious girls' apartment.



"NOW FOR THE SPEECH" JORIE WOODS, President of Kappa Alpha Theta for Women at George Washington University, speaking at a meeting.

A nation in the heart of them must and industry present but

der tells us that this is a ere charter members of a his enthusiasm is a result of rush season, climaxed n of their apartment.

take a detour from our ghton and see how a new il beginning on a campus apters are already firmly pus where life seems to ty life.

kers tells us that Gamma pa Alpha Theta started ers, entered rush season ith the help of alumnae, th 24 fine pledges. She that had been selected or rushing. Worse than l to pledge the plumber, in order to get their sentable. Several alum- : of tables, chairs, and sferred to the Theta nples of the material leck their rooms hang- and with signs read- ere," or "Sofa will be went into rushing. In d in the kitchen, and nces, the girls came heir guests with *Ring eta*, and entertained he last party brought of the first chapter, ing in 1870. Each of represents a different well-rounded group, unders.

heta apartment, now t difficult to imagine girls described. The iny new electric re- new cupboard unit, ley Shorb, Housing n with gay rose and ressing table, has a hich would be diffi- haped chapter room id cool green. The o the right as you rner with a scarlet ern coffee table of it and twin tables

of the same wood on either side of it. On the twin tables are a pair of exquisite modern Persian lamps, fitting into the theme of the room. Several solid green sectional chairs find appropriate places, as do several wing back chairs upholstered in a green and scarlet bird print. A modernistic table sits in another corner between two clusters of sectional chairs which makes an excellent "chat" corner. Degas prints decorate the luscious green walls.

We are convinced that in spite of trials and tribulations, the girls are the closest friends and among the top of the list of chapters.

As the sun sinks over the Nation's Capital, we leave the Thetas singing one of their favorite rushing songs; a song whose words seem to express the feeling of love and loyalty prevalent among the girls of the Gamma Kappa chapter of Kappa Alpha Theta at George Washington university.

BETTY LONG



"NOW FOR THE SPEECHES"—GAMMA KAPPA'S INITIATION BANQUET. JEAN OSWALD, new initiate; LILLIAN WILSON, President of District VII; LESLIE METHENY, Colonizer; VIRGINIA GRIMM, Grand President; MARJORIE WOODS, Toastmistress; PEARL HIGBIE, Extension Chairman; VIRGINIA KIRKBRIDE, Director of Activities for Women at George Washington; EMMA MAE VICKREY, President of the Washington Alumnae; BETTY LONG, President of the Washington Junior Alumnae; BETTY HOGATE, Alumnae Rush Chairman.

A national fraternity is built on a collective national consciousness engendered in the hearts of all. But the local chapters have duties as well as rights. Each of them must earn its place, and maintain that place, by its own essential diligence and industry; then, clearly, it will be playing a winning game, not only for the present but for posterity.

Sigma Phi Epsilon—*Journal My '46*