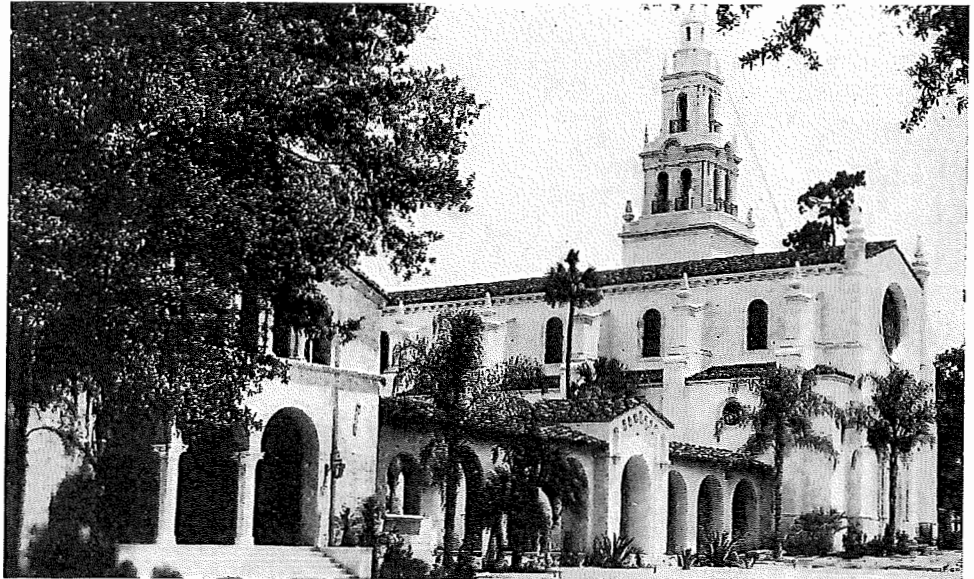


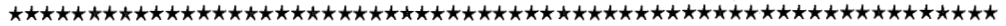
KAPPA ALPHA THETA



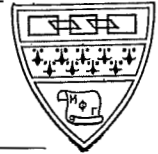
THEATER AND CHAPEL OF ROLLINS COLLEGE

MARCH · 1933
VOLUME 47 NUMBER 3

March, 1933



ROLLINS INSTALLATION



INSTALLATION LUNCHEON GROUP

THE colonization at Rollins is a real adventure. The college has broken way from old traditions in curriculum and method and is experimenting along all sorts of lines. Naturally students attracted and admitted to such a college are a sturdy type. To gather together in three weeks thirteen girls who chose to be Theta pioneers on a campus where already were established six fraternities for women, shows an adventurous spirit that measures the quality of Gamma Gamma's charter members.

It is a private adventure on my own part also, leaving home and husband to live in the chapter house as chaperon and adviser,

one that I have enjoyed and that has called on the best I had to give.

The linking of Theta and Rollins is much to the mutual advantage of each. The college will be an interesting addition to our chapter roll. Its experimental nature provokes the most eager interest and response on the part of students, faculty, and observers. The chapter, in maintaining a center of understanding friendship and rational living takes a definite responsibility in the Rollins plan.

Taken together, Rollins college and Gamma Gamma chapter make a combination whose fortunes it is good fortune to share.

MARTHA CLINE HUFFMAN

Events in Sequence

KAPPA ALPHA THETA on her sixty-third birthday anniversary, January 27, 1933, added a new member to her family and gave herself a second Florida unit with the installation of Gamma Gamma chapter at Rollins college, Winter Park.

Nineteen chapters through fifty-two representatives, including the daughter of Founder Alice Allen Brant, Edith Brant Travis, Alpha, of Cocoa, Florida, took active part in the inspiring ceremonies.



FOUNDER'S DAUGHTER
Mrs Travis

Martha Cline Huffman, Rho, former Grand president, who has been in charge of the Rollins colonization and who is beloved by Florida Thetas for her interest in the establishment of the first Theta chapter in the state, Beta Nu at Florida state college for women, assisted Alline Smith Wright, Alpha Mu, Grand vice-president, at the initiation. This was on the night of Founders'-day.

Mary Katharine Huffman was the first initiate. Two other Theta daughters were given badges on this memorable occasion; Nancy Gantt (daughter of Zola Dellecker Gantt, Rho) Scarsdale, New York, and Mary Virginia Taylor, New Orleans. Nancy Pusey Taylor, Alpha Delta, shared with Mrs Huffman the thrill of attending her daughter's initiation.

Rosamond Carson, Ruth Jeanne Bellamy, Twanet Evans, Elizabeth Hyde, Ruth Arrant, Rogene Corey, Marjorie Bastian, Sally Lim-

erick, Virginia Jones (Theta sister), and Katharine Rice were the other charter members of Gamma Gamma.

Clara Sheldon Schrieber, Miami Beach, Florida, was given a courtesy initiation for Beta Tau chapter, Denison college, Granville, Ohio.

Installation services were at noon January 28 in the chapter house with L. Pearl Green, Phi, completing the ceremonies which joined Gamma Gamma to Kappa Alpha Theta's chain.

At the installation luncheon at the Whistling Kettle tea room, Katherine Schaefer Hiatt, Beta, of Orlando, Florida, was toastmistress. Mrs Wright gave the toast to the Theta Founders. Hutton L. Wattley, Alpha Phi, New Orleans, represented Mrs T. T. Moore, District president, in giving the welcome to Gamma Gamma. Mary Katharine Huffman made the response. Miss Green, Nancy Pusey Taylor and Sally Cornell, Beta Nu, who read the Thetagrams of congratulations from alumnae and college chapters throughout the country, also appeared on the program. With the loving-cup apostrophe, Mrs Huffman closed the services.

The installation festivities closed with a reception and dance at the Winter Park Woman's club with Dr and Mrs Hamilton Holt of Rollins college receiving with Theta's national officers. NORMA DAVIS, *Beta Nu*



THE HUFFMANS
Martha C and Mary K

THE
eigh
Gamma
to all o
The
by the

From
two-hun
stallation
day to
dark," a
"The
us a thr

KAPP.
the
Winter l
of Martl
in Septe
desirable
Situation
Lake Vi
"Beanery
Rollins s
The
one of

Through Visitors' Eyes

THE enthusiasm of visiting Thetas from eighteen college chapters and the joy of Gamma Gamma initiates was an inspiration to all of us.

Theta's organization will be strengthened by the addition of this group; and by con-

tacts with such a modern and progressive college as Rollins. We will all return to our various chapters broadened by our contacts with these people and this new realization of the sisterhood of Kappa Alpha Theta.

NEW ORLEANS VISITORS



BETA NU VISITORS

From the girls of Beta Nu who drove two-hundred-eighty miles to attend the installation, and had to leave so early on Sunday to get back to their college "before dark," according to Florida state rules.

"The installation of Gamma Gamma gave us a thrill. We truly believe that with two

chapters in Florida colleges Theta will now do something really big in the state.

"And the new Thetas are just swell. Every one of them has a distinctive personality. We like them. We all are proud to have them wearing Theta Kites."

From Colony to Chapter

KAPPA ALPHA THETA national, through the interest of the Thetas resident in Winter Park and Orlando and the leadership of Martha Cline Huffman, official colonizer, in September 1932 rented one of the most desirable houses available for fraternity use. Situation: almost on campus, a block from Lake Virginia, and only two blocks from "Beanery," the college commons where all Rollins students have their meals.

The Spanish type house is a two story one of white stucco with green tile roof.

Eight large orange trees, now covered with fruit and blossoms, are in the back yard. A side drive leads under a bougainvillea covered porte-cochère to a garage for members' cars.

First the house—719 French avenue—then the arrival of "The group." Only two members of it, Ruth Bellamy and Rosamond Carson, had known each other before. (The other Rollins girls interested in the group by Mrs Wright, Grand vice president, the previous spring, did not return to Rollins.) Anna-

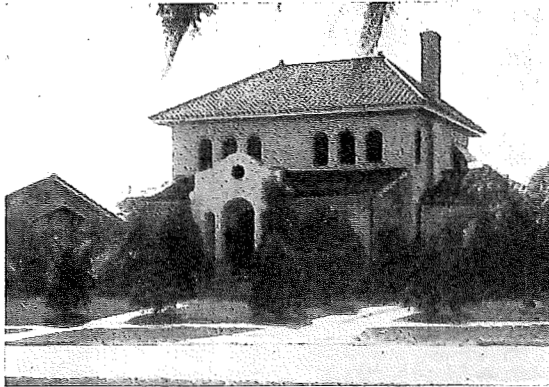
r), and
er mem-

i Beach,
tion for
ranville,

on Janu-
.. Pearle
es which
t Alpha

at the
atherine
Florida,
the toast
Wattley,
ted Mrs
t giving
ry Kath-
e. Miss
lly Cor-
grams of
college
also ap-
loving-
the serv-

l with a
er Park
amilton
Theta's
a Nu



GAMMA GAMMA CHAPTER HOUSE

jeanne Pendexter, Tau, was a Theta transferring to Rollins. Martha Cline Huffman, Rho and a former member of Grand Council, was to be organizer and chaperon. Her daughter, Mary Katharine, was entering Rollins, transferring from Nebraska, where she had been a Rho pledge.

Almost before we had time to unpack, we found ourselves, the Theta colony, accepted into Panhellenic and plunged into a most—well—amazing rushing season. Enough rules for seven colleges—and no copy of them. For a hectic two weeks the four college girls and Mrs Huffman, and nearby Thetas, rushed.

Then came pledge day—and Martha Cline Huffman put Theta pledge pins on Rosamond Carson and Ruth Jeanne Bellamy (the two members of the group already pledged to Theta) and on nine of the most rushed new girls. The group after pledge day included one initiated Theta, Annajeanne Pendexter and Mary Katharine Huffman, Marjorie Elizabeth Bastian, Rogene Corey, Twanet Evans, Nancy Gantt, Virginia Jones, Sally Limerick, Katharine Rice, Katherine Seaber, Mary Virginia Taylor, and the two of the original group, Ruth Jeanne Bellamy and Rosamond Carson.

Then began the period of pledgehood, functioning as a chapter of pledges. Probably we met some of the same problems all groups have had before us, but ours were simplified

by the presence of Martha Cline Huffman.

In November Elizabeth Hyde was pledged and moved into the chapter house. Ruth Arant was pledged in December.

After the holidays every thought was of the coming installation, set for Founders' day, January 27. Tests were taken, plans made, and on Friday the twenty-seventh Thetas began to arrive by car and by train.

Saturday afternoon we were fullfledged Thetas—and could hardly believe it. All one can say is, we felt like all Thetas must when they first wear kites. It was too good to be true, and still it was true.

It meant much to us to have the Council members, Mrs Wright and Miss Green, here. Somehow they lost for us their official status those few days and were our sisters, as Mrs Huffman has been.

We've grown to love Mrs Huffman so much that we are trying our best to persuade her to "leave home" for another year, so that our Theta home won't be broken up by the loss of her. As a chaperon she is—well pretty much O.K. We'll never be so lucky as to have another like her.

Now above the lintel of 719 French avenue there is a wrought iron tablet of the Greek letters K A Θ, an installation gift from Mrs Coral Merchant Orton, Mu.

F. ROSAMOND CARSON



MRS HIATT
Adv. Bd. chairman



ROSAMOND CARSON
President

RUTH .
ami
Marj
transfer
home in
Ruth
Orlando,
(scholast
age); ne
per; chap
French cl
dent of C
F. Ro
Babson F
politan cl
board; sp
tor for
workshop
of Gamm
Roger

man,
(
ginia
]

Who They Are—the Charter Members

RUTH ARRANT, junior, transfer from Miami university, home in Miami, Florida.

Marjorie Elizabeth Bastian, sophomore, transfer from the University of Louisville, home in Anchorage, Kentucky.

Ruth Jeanne Bellamy, senior, home in Orlando, Florida. Member of Key society (scholastic, in which she has highest average); news editor of *Sandspur*, college paper; chapel committee of Student council; French club; Cosmopolitan club; vice-president of Gamma Gamma chapter.

F. Rosamond Carson, senior, home in Babson Park, Florida. French club; Cosmopolitan club; Glee club; member of W.A.A. board; sports head of volleyball; society editor for *Sandspur*; member of Dramatic workshop and of Rollins players; president of Gamma Gamma.

Rogene Corey, junior, transfer from Pine

Manor, home in Scarsdale, New York, where she was a debutant last year.

Nancy Gantt, freshman, Theta daughter, home in Scarsdale, New York. Member Glee, French, and Philosophers clubs.

Mary Katharine Huffman, sophomore, transfer from Nebraska, Theta daughter, home in Broken Bow, Nebraska. Member of W.A.A.; reporter for *Sandspur*; secretary of Gamma Gamma.

Elizabeth Hyde, junior, transfer from Sarah Lawrence, home in Buffalo, New York. Taking a pre-medical course.

Virginia Jones, freshman, Theta sister from Cincinnati. Member of W.A.A., woman's golf team, in line for golf championship.

Sally Limerick, junior, transfer from Holmquist, home in Newburgh, New York. One of highest scholastic average students first semester. Member of W.A.A.



GAMMA GAMMA IN FRONT OF ITS CHAPTER HOUSE

Top row: Twanet Evans, Mary K. Huffman, Marjorie Bastian, Nancy Gantt, Mrs Huffman, Katherine Seaber (pledge), Ruth Arrant, Virginia Jones.

Center row: Katharine Rice, Ruth Jeanne Bellamy, Rosamond Carson, Mary Virginia Taylor, AnnaJeanne Pendexter, Tau.

In front: Rogene Corey, Sally Limerick, Elizabeth Hyde.

Huffman.
pledged
Ruth Ar-

t was of
ounders'-
n, plans
y-seventh
by train.
pledged
All one
ust when
od to be

Council
en, here.
ial status
s, as Mrs

Huffman so
persuade
year, so
en up by
is—well
so lucky

French
et of the
gift from

ARSON



CARSON
ent

Annajeanne Pendexter, junior, a Theta transferring from Northwestern university. Woman's sports editor for *Sandspur*; feature photographer for college publications; woman's golf team; treasurer of Gamma Gamma.

Katharine Rice, freshman, from South Orange, New Jersey, majoring in mathematics.

Twanet Evans, senior, home in Sheffield, Alabama. First in line for German exchange scholarship next year.

Mary Virginia Taylor, freshman, Theta daughter from New Orleans, Louisiana. Glee club; freshman sports representative in W.A.A.; French club.

PLEDGES

Katherine Seaber, freshman, home in Maplewood, New Jersey, member W.A.A.

Evaline McNeil, sophomore, transfer from the University of Chicago, home in Chicago, Illinois, entered Rollins in February.



THE TAYLORS
Mary V and Nancy P

Appreciation

GAMMA GAMMA CHAPTER at Rollins college takes this opportunity to tell all the college and alumnae chapters how much it appreciated their greetings received during initiation and installation ceremonies. You made our first birthday party a very happy one!

MARY K. HUFFMAN

Who Was There?

HERE are listed the names of the 39 Thetas, initiates of 18 different chapters, who helped install Gamma Gamma chapter by initiating its thirteen charter members.

From the one other chapter in Florida, Beta Nu at Tallahassee, came four undergraduates—Lois Hicks, Edna Mae McIntosh, Lucille Hodsdon, Sally Cornell; and nine alumnae—Lyla Scarborough Barber, Margaret Thomas, and Theodora Thompson Hauptmann, from Gainesville; Constance Seybold and Margaret Parrott, Miami; Edna Wendel and Marie Louise Sterrett, Orlando; and two of the chapter's charter members, Norma Davis of the Miami Beach news service staff, and Mona Alderman, now a member of F.S.C.W. faculty.

Two other faculty members from F.S.C.W.

were present, Dr Jennie Tilt, Alpha Chi, and Mildred Finnegan, Alpha Eta. Other Alpha Eta visitors were—Katherine Harris, Nashville, Margaret and Emily Hughes, Jacksonville. Also assisting were—Josephine Micheli Johnson, New Orleans, and Annajeanne Pendexter, Chicago, one of the organizers of Gamma Gamma, both from Tau; Lois Ellsworth and Hutton Laurans Wattlely, formerly president of the district, from New Orleans and Alpha Phi; Marion Sukeforth Carr, St Petersburg, Alpha Kappa; Lois Stewart Miller, St Petersburg, Gretchen Van Petten, Miami, Nell Aydelotte Rice, Winter Park, Katherine Schaefer Hiatt, Orlando, all of Beta; Anna Bronson Johnston, Winter Park, Alpha Gamma; Doris Stillman Cook, Melbourne Beach, Chi; Helen Eastwick Harper, Media, Pennsylvania, Alpha Beta; Addie Priest,

Crivitz, '1
Cocoa, A
dale, Bet
lando, B
New Yo
Kansas,
Gamma
Broken J
Taylor,
Sheldon
tiated Be

AN AD
Hay
founding
venture—
horizon
venture w
chapters,
Alpha Tl

Like
came to l
almost fo
well estab
had provi

In re
has been
internatio
Canada;
than wait
beg the p
ventures 1

an, Theta
iana. Glee
tative in

home in
W.A.A.
transfer
home in
in Febru-

ollins col-
to tell all
ow much it
ed during
nies. You
ery happy

UFFMAN

a Chi, and
her Alpha
ris, Nash-
; Jackson-
ie Micheli
anne Pen-
anizers of
Lois Ells-
; formerly
w Orleans
1 Carr, St
ewart Mil-
etten, Mi-
ark, Kath-
of Beta;
rk, Alpha
Melbourne
er, Media,
lie Priest,



MIAMI VISITORS WITH MRS WRIGHT AND MRS HUFFMAN

Crivitz, Wisconsin, and Edith Brant Travis, Cocoa, Alpha; Pauline Oliver, Fort Lauderdale, Beta Rho; Virginia Sleeper Pleus, Orlando, Beta Iota; L. Pearle Green, Ithaca, New York, Phi; Alline Smith Wright, Salina, Kansas, Alpha Mu; Martha Cline Huffman, Gamma Gamma's organizer and chaperon, Broken Bow, Nebraska, Rho; Nancy Pusey Taylor, New Orleans, Alpha Delta; Clara Sheldon Schrieber, Miami Beach, newly initiated Beta Tau member.

Gamma Gamma's charter members are—Mary Katharine Huffman, Nancy Gantt, Mary Virginia Taylor, Virginia Jones, Rosamond Carson, Ruth Jeanne Bellamy, Twanet Evans, Sally Limerick, Rogene Corey, Marjorie Bastian, Katharine Rice, Elizabeth Hyde, Ruth Arrant. Thirteen is this chapter's lucky number. AnnaJeanne Pendexter, Tau, who did so much in colonizing, is affiliated. There are two pledges, Katherine Seaber and Evaline McNeil.

Officially Speaking

AN ADVENTURE in friendship" is how John Hay defined a fraternity. Surely the founding of Kappa Alpha Theta was an adventure—an adventure to widen the college horizon for women students. An added adventure was the founding of each of the older chapters, the pioneer work of making Kappa Alpha Theta truly a national organization.

Like all maturing organizations, Theta came to be more and more conservative; she almost forgot to adventure, content to follow well established precedents and methods that had proved they brought success.

In recent years Theta's adventure spirit has been revived: first, by venturing into the international field to establish chapters in Canada; then by colonizing groups rather than waiting for well established locals to beg the privilege of Theta charters. Both adventures now have become accepted practices.

The colonization at Rollins brought with it some new adventures. While Rollins college was established almost fifty years ago, its national prominence is only a few years old, and is based on its adventure with a new method of conducting college courses, a method well depicted in Ruth Jeanne Bellamy's contribution to this story.

This adventure is frankly called an experiment; a most interesting one, which has attracted students from all over the nation. Here Kappa Alpha Theta has gone to share in the adventure, in the real pioneer spirit of its founding. The new chapter's members are adventurers too; as the list shows, most of them have gone far from home and their natural college centers, to participate in the Rollins adventure.

Theta colonization adventured on a new plan at Rollins, too. Instead of the previous

practice of depending on locally resident Thetas, aided by visiting officers, to form and develop a group, after Mrs Wright's preliminary work at Rollins had been approved by convention, Martha Cline Huffman, past member of Grand council who had wide acquaintance in the fraternity and deep understanding of Theta policies and ideals, was sent to Winter Park to secure a chapter house, and organize a colony. She was ably assisted by Annajeanne Pendexter, Tau member who had transferred from Northwestern, and the two girls whom Mrs Wright previously had chosen, and also by Theta alumnae resident in Winter Park and nearby Orlando. Of these Theta alumnae, of various ages and varied college backgrounds, Mrs Huffman said: "Everything I asked them to do they did cheerfully and efficiently: they are busy, outstanding women in the community, but their loyalty and devotion to this new Theta adventure never faltered." Thetas throughout Florida, and also in far distant states, helped, by looking up recommendations for girls entering Rollins and sometimes doing a bit of

summer rushing. Since Gamma Gamma members will continue to come, no doubt, from far corners of the country, this long distance aid will continue to be needed—and, we confidently believe, continue to be given.

This newest Theta adventure has succeeded. Will continue to succeed, we believe. For this happy outcome of its most recent adventure, Kappa Alpha Theta owes an unpayable debt to Martha Cline Huffman; without her wise guidance, sane judgment, and constant care, the adventure would have been much longer in reaching success, and might have met with insurmountable difficulties en route. Theta can never cease to be grateful to Mrs Huffman for giving it Gamma Gamma chapter; it adds one more service to her already long list of fine, unselfish acts in behalf of Kappa Alpha Theta.

So, thanks to Martha Cline Huffman, just 64 years after four adventurous girls founded Kappa Alpha Theta, that fraternity welcomes Gamma Gamma, its sixty-fourth active college chapter.—L.P.G.



"PENNY" AND "JO"
of Tau



NEW ORLEANS VISITORS



MRS SCHRIEBER
Beta Tau

SET like
Rollins
Rollins co
campus I
ginia, in
The clim
much of
bial beau
eternal s
new Mex
of which
monizes
white to
outlined
quickly f

But th
its most
outward
Rollins co
liberal ar
the field
from eve
tries have
experime

The
eight-hou
ing and
recreation
sor and s
whereby
vance at l
receive ac