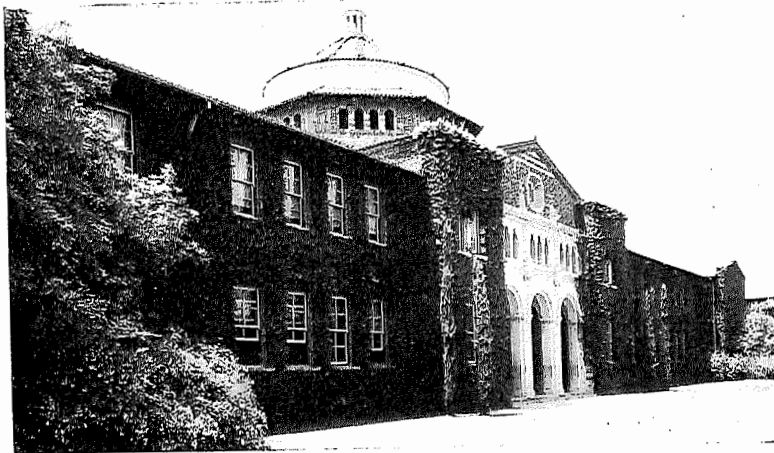


politian situation there should be new material and dependable alumnae in plenty. We hope particularly to be good neighbors to the college chapters at the universities of Oklahoma and Texas. Good ranchers in this part of the country measure neighborhoods by the hundred miles, so we should all be very close together.

The officers and members of Dallas alumnae are—Lola McCarty Swim, Beta Beta, president; Martha Scurry Potts, Alpha Theta, treasurer; Hallette McPhail McClelland, Alpha Theta, secretary; Sue King, Alpha Theta, editor; and Loring Smith, Alice Randall Dysart, Julia Weir Molenaer, Margaret Myrick Crawford, Margaret Lawther Warren, Leda Nash Williams, Ethel Gordon Randall, Olga Lightfoot Gano, Evantha Scurry Bowles, Jean Figh Crawford, Linna Williams Clark, Anita Ohmsted Barthlow, Jane Walker Burgess, Jenness Frieze Gough, all Alpha Theta; Katherine Gentry Clark, Alpha Mu; Claudia White Puckharber, Alpha Omicron; Margretha Roth Bryan, Alpha Iota; Helen S. Fernald, Upsilon; Ima Winchell Rettger, Psi.

*Halette M. McClelland*



MILLSPAUGH HALL (U. C. S. B.)

### BETA XI

#### Pledge service

On the afternoon of June 12, ninety Thetas from Los Angeles and near by towns gathered at Omicron's chapter house, to

pledge to Kappa Alpha Theta the members of Sigma Alpha Kappa of the University of California, Southern branch.

Mildred Scherer played, as the first pledge entered the room at 4:30 promptly, where Vera McIntosh Bemis, Grand vice president, presided, assisted by Marie Davis Thomson, Grand treasurer, and Leslie Wilde Ganyard, District president. Thirty-nine girls, in groups of six and eight, pledged to become loyal and enthusiastic workers for Kappa Alpha Theta.

Anne McVicker Neal as chairman, was ably assisted by Betty Follen Connolly, Marian Neuls Lower, Clara Parmalee Knight, Elizabeth Gude, Elizabeth Clauss, and active members from Omicron, including Catherine McCully, Frances Scarrett, Margaret Barnard, and Loraine Keim.

After the formalities of the pledging, all Thetas and Thetas-to-be joined in singing Theta songs, led by Martha Smith, Omicron. When voices could sing no more, Margaret Barnard, in behalf of Omicron, invited all to enter the dining room and partake of a delicious punch and dainty cakes. Thus ended the first day of the ceremonies which gave us Beta Xi chapter, auspiciously as guests at the home of the other Los Angeles college chapter, Omicron, at the University of Southern California.

*Anne McVicker Neal, Chairman, Pledge committee*

### Initiation

Saturday afternoon and evening, June 13, occurred the initiation of Sigma Alpha Kappa members into Kappa Alpha Theta. Early in the morning the committee from Los Angeles alumnae, in charge, invaded Cumnock school of expression and proceeded to turn the "Shakespeare room" into an initiation hall. The benign bust of the understanding bard was consigned to a far corner, but off and on all day he winked knowingly at the labor of love behind scenes and closed his eyes discreetly at two o'clock when all was in readiness and the first of the neophytes was at the door.

It was an ideal initiation setting, for not only was the "Shakespeare room" at our disposal, but the long solarium, the library, and many studios were ours, and the restful, soft-chaired drawing room was a happy gathering place for alumnae as they assembled. And who will ever forget the supper served out in the beautiful court just as the sunset lights were fading? The caressing breeze, that so usually breaks imperceptibly upon the silence of the sunset, made crooked the part in the marcelled

November, 1925

bob and whisped out a curl or so from its restraining hairpin but it refreshed every one and gave new inspiration for the evening ceremonies.

The officers in charge were: Vera McIntosh Bemis, Grand vice-president, Marie Davis Thomson, Grand treasurer, and Leslie Wilde Ganyard, President of District VI. Assisting them, were members of Los Angeles alumnae, Omicron, and representatives from other chapters in the district.

Before eleven o'clock thirty-seven new members had assumed the responsibility as well as the privilege of wearing the badge of Kappa Alpha Theta. Before midnight all was as it had been before the invasion of the committee; the bust in the corner had resumed its normal place and seemed to agree that that portion of the drama of fraternity life is not only thrilling and ennobling to witness, but tear stirring and sacred in memory.

The new Thetas are—Fern Marguerite Bouck, Margaret Boyd, Alice L. Brown, Annis Keyes, Joyce Jewell Turner, Mabel Westenhaver, Cynthia Ann Fry, Druzella Elizabeth Goodwin, Corinne Little, Beth Shuler, Mildred Stanford, Marion A. Whitaker, Lois Fee, Marjorie Finch, Elizabeth Fontron, Elizabeth Keyes, Helen Neill, Dorothy Walton, Adele Ward, Barbara Brinckerhoff, Ann Fontron, Dorothy Grannis, Evelyn Gregg, Katherine Irving, Muriel James, Katherine Kedzie, Ruth Kimball, Thelma Martin, Marjorie Randolph, Meryl Stateler, Elizabeth Wellborn, Hazel Converse, Mildred Crozier, Evelyn Hauerwauss; and three alumnae, Clarissa Bachelder Cadwalader, Ina Thach, Mary K. Lockwood.

*Edna Wilde Brooks, Chairman, Initiation committee*

#### Installation

As the initiation welcomes the individual into fraternity life so installation welcomes the chapter. The ceremony is symbolic of the dignity and breath of our national organization. As Marie Davis Thomson stood in the light of the tall candelabra, beside a table massed with yellow flowers, and added Beta Xi's link to the fraternity chain it seemed a very beautiful climax to the week.

The new chapter then stepped back into the circle and Pasadena alumnae went forward to receive its alumnae charter—again emphasizing the fact that fraternity interests and joys are not only for the college days but for all the years.

*Helen Parker Finch, Chairman, Installation service*

#### Banquet

One of the happy occasions was the banquet given in honor of Beta Xi, held in the beautiful banquet hall of the Friday morning club building, on Monday evening following Installation.

Two-hundred-and-thirty Thetas were present representing chapters all over the United States. Honored guests besides officiating officers were Mrs Marian Whipple Garrettson and Mrs Anna Harrison Nelson, past Grand presidents.

Before the company was seated Mrs Nelson gave the toast to the Founders. Mrs Vera McIntosh Bemis, Grand vice president, presided most delightfully as toastmistress. A sincere welcome to Beta Xi was extended by Mrs Leslie Wilde Ganyard, District president. Fern Bouck happily responded and in conclusion introduced each new member. Mrs Marie Davis Thomson, Grand treasurer, responded to the Loving-cup toast, while the *Loving-cup apostrophe* was read by Mrs Helen Abrams Troy, California state chairman. When Marian Whipple Garrettson arose to speak every one in the room arose as one person expressing the great admiration, love, and devotion everyone has for her. With brilliance and rare charm, she spoke very beautifully about *Theta service*, making each one realize anew the joys and responsibilities of being members of Kappa Alpha Theta.

Mrs Edna Wilde Brooks, concluded the program by reading the telegrams and letters of welcome and congratulations from Theta chapters, college and alumnae.

*Jessie Gilmore Mathews, Chairman, Banquet committee*

#### Reception for officers and Beta Xi

The closing event of the installation of Beta Xi chapter was a reception given by Los Angeles alumnae for the installing officers and the new chapter, introducing them to the faculty and students of the Southern Branch campus. It came as a welcome relaxation after the solemnity of the pledge service, initiation and installation. The joyous and youthful spirit of the youngest chapter was the spirit of everyone present. A large proportion of the chapters and seemingly every generation of Theta were represented.

Many beautiful baskets of flowers, gifts of other national and local fraternities, and candles in tall, silver candle sticks decorated the lovely rooms of the Women's University club. Mildred

March Hawkes, Beta, assisted by a violinist and cellist, provided soft harp music during the afternoon.

In the receiving line were Vera McIntosh Bemis, Grand vice president, Marie Davis Thomson, Grand treasurer, Ann McVicker Neal and Edna Goettler of Los Angeles alumnae, Leslie Wilde Ganyard, President of District VI, Anna Harrison Nelson and Marian Whipple Garrettson, both past Grand presidents of the fraternity, Lily B. Campbell, Alpha Theta, member of the faculty of the Southern Branch, Fern Bouck, president of Beta Xi, and the official delegates of the chapters of District VI, Margaret Barnard, Omicron, Elizabeth Thomas, Omega, Irene Youngken, Beta Delta, and Florence Billinghamurst, Beta Mu. (Phi was unable to send any delegates, as installation dates were identical with final examinations dates at Stanford.)

About sixty members of Los Angeles and Pasadena alumnae chapters, and the Long Beach Theta club, assisted in introducing the girls of the new chapter. Mrs J. B. Lippincott, Miss Sue Barnwell, Miss Jane Spalding, Mrs T. P. McCrea, Mrs Edith Hill Powers, and Mrs Helen Vinyard Peasley presided over the tea and coffee urns. Members of Omicron served in the dining room.

*Bertha Barnard Alvord, Chairman, Reception committee*

#### Beta Xi history

Sigma Alpha Kappa was organized in January, 1915, as a literary group, and became a social fraternity as the university began to develop. We have always taken pride in being the oldest women's fraternity on the campus, and in the fact that we were the first to have a house,—which now proudly bears the name plate of Kappa Alpha Theta.

As the college aspired to be a real university, so did we look ahead to a greater future which lay in the hands of Kappa Alpha Theta. In May of 1924, when we started our petition for a charter real work began. The fall semester brought many letters which added to our excitement and hopes that we were progressing toward our goal. Best of all, Mrs Bemis was able to spend a few days with us the first part of November. Her visit gave us encouragement and spirit to 'carry on.' Gertrude Martin, president of Omega, had been a guest in September, and others who took an interest in our group and visited us were; Margaret Watson, Phi, Maud Schroeder, Alpha Xi, and Elizabeth Thomas, Omega. The latter part of the year brought many festivities, among them a tea given by Mrs Ada Edwards Laugh-

#### OFFICERS OF BETA XI

lin, of Los Angeles Theta alumnae chapter, and a buffet supper in November at which we entertained Omicron chapter of Kappa Alpha Theta. December 27, Sigma Alpha Kappa gave a reception at Mrs L. Brunswig's home for the Theta college and alumnae chapters of District VI. We fully appreciate the whole-hearted support and backing of the Los Angeles alumnae and Omicron chapters, without their help our task would have been too difficult.



January found us with great hopes for the New Year, and sure enough we were not disappointed. During our annual house party in the mountains the last of the month, district VI telegraphed its approval, and the house party dissolved into a whirlwind of rejoicing, for our hopes were now more than a vision, they had become a possibility. But the fulfillment of the petition had still to come, and a feeling of suspense and excitement hovered over all of us during the following months.

Finally on May 4, the beginning of one of the twelve beautiful months in California (if we did not boost a bit you would not be sure this was really from us), our longed-for charter was granted. We were ever so happy, and celebrated the memorable day at a great bonfire rally held in honor of the new university site, but as we felt,— also in honor of Kappa Alpha Theta.

The first commencement ever held at the Southern Branch was over the second week of June, and then came the thrill of our installation ceremonies, when Sigma Alpha Kappa ceased to exist and became Beta Xi of Kappa Alpha Theta.

*Meryl Stateler*

### BLOOMINGTON ALUMNÆ

The Bloomington, Indiana, alumnae club which has just received its charter as an alumnae chapter has been in existence for at least thirty-five years. Its membership has always comprised practically all alumnae Thetas resident in Bloomington, and it is perhaps a coincidence that the twenty members necessary to form an alumnae chapter has constituted an average membership for the club during the years of its existence. Many visiting Thetas sojourn in Bloomington for a year or two, large classes of Thetas graduate from Indiana university every year, but the average of twenty or twenty-five resident Thetas remains the same. If this means that Thetas prefer farther horizons, it means also that the members of the Bloomington alumnae club, through its small membership, develops a close, intimate relationship. Mrs Lizzie Harbinson Dunn, one of the charter members of Beta, is one of the most faithful and enthusiastic attendants.

At the time of the building of Beta's new house, the Bloomington alumnae club acted as a medium between the alumnae of the state and the chapter. The Beta chapter building association has a preponderance of Bloomington alumnae among its officers, the natural assumption being that those alumnae who are on the ground can do most effective work in helping to build and administer the house.

Many traditions have grown up during the club's existence. The most cherished is that of Senior initiation. This service was written by Miss Louise Maxwell, Mrs Alice Springer Fitch, and Mrs Ella Rawles Springer. It has been changed and modified for use in other chapters, but Beta alumnae in Bloomington claim the honor of its authorship.

Parties for the college chapter are given frequently. Gifts to the chapter-house have been numerous. Dues of the club were raised from one dollar to two several years ago, and during the building of the chapter-house the alumnae adopted the plan of other organizations for raising funds, and gave benefit picture shows and rummage sales. For the last few years twenty-five dollars a year has been sent to Theta's scholarship fund. The club is affiliated with the Local council of women of Bloomington, and does its share of civic work.

As an alumnae chapter the club hopes to continue its service to local Theta interests, and at the same time to place itself in more formal manner at the service of the national fraternity.

*Alta Brunt Sombower*

If the true service spirit is to prevail in a chapter, it must come about voluntarily. The question is, do the underclassmen perform services because they want to and enjoy the spirit of service, or because they are made to do things? When a girl reaches college age she should at least be mature enough to catch a serving spirit in a house and profit by it. The value in such service in a house lies not in learning to do what one is told to do, but in seeing what needs to be done, and the taking of responsibility upon one's shoulders and doing it.

The greatest difficulty lies in the fact that girls just coming into a house do not realize that their step entails any responsibility on their part.

In some fraternities there is an organization of upperclassmen before which the underclassmen appear when they have been lax in any of their duties, or when their attitude is not what it should be. When these meetings are held the girl concerned appears before the committee, is told her offense, and is given an opportunity to give an excuse or reason which shall justify her action. This method is no doubt effective, but it violates in my opinion all that a fraternity should stand for. Such a court of appeal keeps a girl in awe, frightens her into doing as she should. No motive of love for the organization and the desire for its progress prompts her actions, if she is ordered to do certain things and punished if she fails.

This method is one far more suitable to high school than to college girls. Most girls resent being called up to explain the why and wherefore for many of their actions. One is supposed to have learned a little discretion by this time and to know what to do without being forever guided by rules. Duties in a chapter house such as telephone and door-bell answering are not such neglected ones; scholarship, school activities, and such duties are the ones for which the girls need most prodding, but a realization of one's social and scholastic obligation ought, to a certain extent, to cure this deficiency.—*Δ Z, Lamp*