

B. Analysis
(Fractions of a per cent have been ignored)

Fraternity	N. E.		N. C.		So.		West	
	Chaps.	%	Chaps.	%	Chaps.	%	Chaps.	%
ΑΧΩ.....	7	15%	23	52%	4	9%	10	22%
ΑΔΠ.....	5	12%	16	41%	12	30%	6	15%
ΑΓΔ.....	6	18%	17	51%	4	12%	6	18%
ΑΟΠ.....	7	25%	10	35%	6	21%	5	17%
ΑΦ.....	5	18%	13	48%	2	7%	7	26%
ΑΞΔ.....	9	23%	21	55%	2	5%	6	15%
ΒΦΑ.....	1	14%	2	28%	1	14%	3	42%
ΧΩ.....	15	21%	25	35%	19	27%	11	15%
ΔΔΔ.....	13	20%	27	41%	13	20%	12	18%
ΔΓ.....	7	17%	21	53%	1	2%	10	25%
ΔΖ.....	6	15%	19	47%	8	20%	7	17%
ΓΦΒ.....	4	12%	13	40%	4	12%	11	34%
ΚΑΘ.....	10	19%	21	40%	8	15%	13	25%
ΚΔ.....	9	18%	20	40%	12	24%	9	18%
ΚΚΓ.....	12	24%	23	46%	4	8%	11	22%
ΦΜ.....	10	24%	14	34%	12	29%	5	12%
ΠΒΦ.....	15	22%	27	39%	12	17%	14	20%
ΣΚ.....	10	29%	13	38%	4	11%	7	20%
ΖΤΑ.....	5	11%	21	48%	12	27%	5	11%

COURTESY

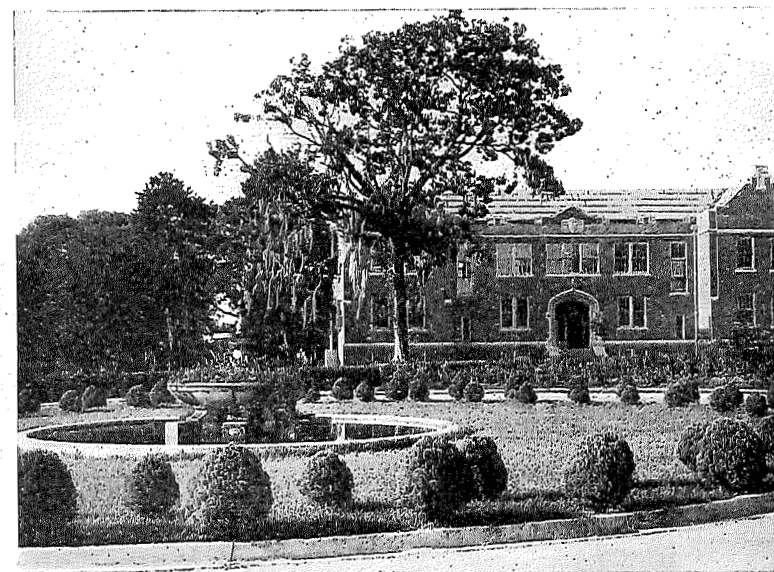
We are rather shy on fraternity courtesy. Now what is that? Common or garden courtesy may be defined as a sympathetic regard for the rights and feelings of the other fellow; fraternity courtesy is this quality heightened and enlivened by the bond that unites.

Now note several omissions of this duty. Grand Sage Palmer has had to remind chapters and officers of the good custom of sending a word of welcome to new chapters. "The official report of the installation of Omega chapter shows that less than fifty per cent of the chapters and officers remembered to send messages of welcome." Surely that was a lapse of fraternity courtesy.

Again, not an officer of the fraternity with whom I have talked or to whom I have written, but has said he has trouble getting his correspondence to the chapters answered. As an ex-Grand Sage wrote to me, "Neglect is the lady's name; all the chapters love her." . . .

I have no doubt that if any brother visited any chapter from coast to coast, he would be cordially received and royally entertained, but does not fraternity courtesy—the kind that belongs to a national body—extend beyond the walls of the chapter house? Will a letter from a brother receive the same prompt consideration that he himself would receive?—Σ II, *Emerald*

INSTALLATION



FOUNTAIN AND SCIENCE HALL, FLORIDA

Alpha Theta enters Kappa Alpha Theta

June is a month rich in associations—summer, roses, brides—but for us it will always carry an added thrill of meaning. June 28, 1924 brought to us the announcement that Kappa Alpha Theta had granted us a charter. The message consisted of only six words, including "congratulations," but it was dynamic in its effect. Messages flew back and forth across Florida, and all of us exhausted our vocabularies in attempting to describe our elation.

When we returned to college September 17, plans for installation events were already under way. Dr Tilt, Alpha Chi, a member of the faculty, proved herself an executive of tireless efficiency. Since she was the only Theta here, the preparations in which we could not share fell entirely to her. In addition,

January, 1925

she directed our efforts in the carrying out of our part in the plans.

Mrs Bemis, Miss Green, and Mrs Humprey were the presiding officers. Our letters to Florida and Georgia Thetas brought wonderful messages from those who could not attend installation. We were fortunate, however, in having with us two Florida Thetas, Mrs J. I. Conklin, Miami (whose daughter was pledged October 16) and Mrs Fred Travis (Edith Brant), daughter of Alice Allen Brant. Surely the presence of a daughter of one of the Founders of Kappa Alpha Theta was a happy omen for us.

The pledging service took place Thursday evening, October 16, and the initiation of both alumnae and undergraduates was Friday evening. Both ceremonies were held in Science hall. The installation tea was given at the Alpha Delta Pi chapter house Saturday afternoon. Installation took place Saturday evening, and was followed by a banquet at the Leon hotel. Mrs Bemis was toastmistress. Messages of welcome from the chapters of Kappa Alpha Theta were read by Mrs Conklin. Sunday morning a model chapter meeting was held. Representatives from the various chapters gave suggestions as to their local customs and traditions which might be helpful to us. The new officers were installed at that time, also. Sunday evening an informal supper was served by the pledges, and Theta songs, both old and new, rang out most merrily. Monday morning the presiding officers held conferences with new officers. Monday afternoon Gamma chapter of Chi Omega fraternity gave a tea at their chapter house in honor of the new chapter of Kappa Alpha Theta. In the evening, Miss Green spoke in an open Panhellenic meeting.

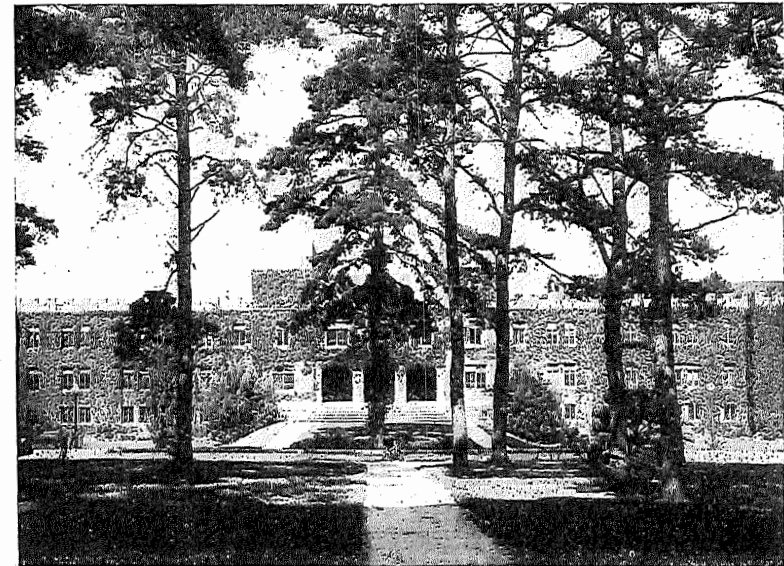
Other guests besides those already mentioned were: Julia Dixon and Myree Hutchings, Beta Lambda; Bertha Scheurmann, Mamie Scincknecht, Dorothy Goodwill, Olive Roberts, Mary Chaffe, Lillian Nunn Evans, Alpha Phi; Catherine Crockett, Marion Matthews, Lucy Grasty, Eunice Slemmons, Alpha Eta; Jeannette Farmer, Beta Beta.

Those initiated were: Helen Beach, Grand Island; Beryl Lovvorn, Okeechobee; Nina Mc Adam, Lakeland; Mona Alderman, Starke; Alice Boyd, Fort Lauderdale; Susan Burdette, Alice Winter, Jacksonville; Lois Curry, Bradenton; Norma Davis, Ruth Rigby, Flo Springer, Elsie Mayer, Miami; Claudia Demeritt, Elizabeth Walton, Key West; Opal Futch, Alachua;

Helen Pinaire, Lake Hamilton; Elizabeth Sanford, Tampa; Inez Turner, Perry; Marion Watkins, Orlando.

Those pledged were: Grace Hansen, '27, Uplands, Nebraska; Blanche Alderman, Starke; Gertrude Boyd, Dorothy Dahlquest, Fort Lauderdale; Mary Brown, Arcadia; Kathryn Carlin, Florence Conklin, Marion Davis, Miami; Margaret Dorman, Tallahassee; Dorothy Fuller, Bradenton; Elizabeth Kellerman, Vero.

Lois Curry



BRYAN HALL—FLORIDA STATE COLLEGE

Developments

Our earliest dreams of a fraternity life were dreamt over golf clubs and our first plans toward fulfillment were perfected over the chocolate cups. Paradoxical it seems when you consider that most of our athletic ability now is in our freshman group. The dreams, though, are matters of only a few semesters ago.

In the winter of 1922-23, eight girls, under the leadership of Cathryn Loomis, began to work definitely toward the development of another fraternal group on the campus of the Florida state college for women. By March 1923 they had secured the permission of the faculty advisory board to organize and

were invited by Panhellenic to send representatives to the closed council. It was not until November 11, 1923—a wonderful Armistice celebration for Alpha Theta—that we received from Kappa Alpha Theta the permission to petition for a charter.

Fast on the heels of this inspiring message came Edna Louise White, an Alpha Phi senior, who was our special guest at our rush party a few days before Thanksgiving. During her visit Edna Louise was presented to members of the faculty, the college mothers and representatives from the seven other fraternities at a tea given by Dr Jennie Tilt, Alpha Chi, a member of the faculty and at present Beta Nu's complete "alumnae board."

By Washington's birthday—Alpha Theta got the big things on the big days!—we were ready for the visit of Mrs Yale B. Huffman, Grand president. There could not have been, it seems, a closer affinity between a group and a woman than was felt during that brief and altogether delightful visit she made on our campus. Some of the dearest memories cherished by the old girls of the chapter are ones in which Mrs Huffman figures prominently.

Mrs Huffman was entertained by the petitioning group at tea in the Chi Omega house and at a number of dinners with the chapter's friends. She probably recalls that at as many places as she was honoree, they served chicken. It gave her a good basis for believing that Southern hospitality and the popular barnyard fowl are synonymous.

Alpha Theta's motto must have been "Work for the night is coming" if the zest and interest with which they labored might be given as evidence. (The same is holding true with Beta Nu chapter.) The reward came June 28 in the form of a telegram bearing the magic words, "Unanimous vote just through convention." There is no need to describe thrills and heart-throbs; they would sound either cold and silly, or saccharine and sticky.

The history of Alpha Theta, as such, came to an inspirational close October 16-18 when its members were installed as sisters in a bigger and better fellowship, Kappa Alpha Theta.

(I might mention here that the other fraternities having chapters on the campus are: Kappa Delta, Chi Omega, Alpha Delta Pi, Delta Delta Delta, Sigma Sigma Sigma, Sigma Kappa, Pi Beta Phi, Delta Zeta and Phi Epsilon (local, petitioning Zeta Tau Alpha.)

Norma Davis



ADMINISTRATION BUILDING, FLORIDA STATE COLLEGE

Impressions made by Beta Nu

My heart turned a somersault and landed in my throat when the train started out of Nashville and Catherine and I were at last out of the reach of all the hobgoblins which had threatened to keep us from going to Tallahassee. We had five pieces of baggage with us—paraphernalia, not clothes. We expected to be gone five whole college days, and we had not even told our Registrar.

When we arrived in Atlanta at 7:30 P. M. the man who sold us our sleeping car tickets; also told us that the Peacock Café would be a nice place to have dinner. Now, the Peacock Café is on the second floor, and while we were trying to hide our eagerness for food; the shop just beneath us caught fire, and five fire engines, two chiefs' cars, and half the population of Atlanta assembled beneath our window. Sit still little heart!*

We thought we were going to have to take time about keeping watch in the dressing room on the way to Tallahassee that night to see if any Thetas got on, but we did not. Jeannette Farmer from Randolph-Macon showed up before we had finished wiping off the cold cream. We knew lots of the same people, and talked till midnight. The next day Catherine said she liked Jeannette because she did not try to be *too* friendly too quickly. Are Thetas everywhere like that?

Tallahassee was a surprise. They have hills; and all the funny green things and crooked old trees full of grey moss, too.

The Alpha Thetas had thought of everything. You see they were almost Kappa Alpha Theta's then. They did not talk too much, or act like they were nervous, but you could see by their eyes that they were just a little excited and tense, perhaps we were, too. Eyes show up rather well when you are all in white, seated around a banquet table with unshaded lights. That was the first night, and just before pledge service. Catherine and I learned exactly how pledge service should be conducted, and since we have come home we have done it twice according to Hoyle! After the service was over, we all sat around on the floor and sang songs. Our new pledges had already learned some Theta songs.

We had all of the services in a large room in one of the college buildings. You see Dr Jennie Tilt is a Theta from Purdue doing research work there, and this room was next to her laboratory. The second morning we fixed up that room

for initiation with the paraphernalia out of the box Miss Humphrey sent, which had everything in it down to the last safety pin. All Thetas know about pledging and initiating, but it is a rare and special privilege to see a chapter installation, and it has to be seen to be appreciated.

On the afternoon of the third day, Alpha Delta Pi loaned the new Theta chapter its charming house for a lovely tea where we received gifts of flowers, members of faculty and other fraternities. After the tea we just had time enough to get home and dress (and dressing for me merely consisted in taking the sleeves out of my afternoon dress to transform it into an evening dress) before installation service, and the banquet at the Leon hotel.

One of the nicest parts of our trip was the chance to rub elbows with the great. At first we were somewhat awe struck, but like most other people who are very great, our Grand officers are very human. Can you imagine Miss Green reading the funny paper? Well, I saw her do it. Catherine and I are both rather tall, and Catherine described Mrs Bemis as a cuddly sort of little person. I got to room with Mrs Humphreys, our new District president. I saw her at the station and then went on to our room to dress. Her clothes which were hanging in the press were quite distinctive and on the bureau were a handfull of matches and a fancy package of cigarettes. Until the day before I left, I was constantly expecting to see her produce a jewelled cigarette holder and light up. It never happened—the cigarettes were chocolate, and the matches were to use after the lights went off.

Eunice Stemmmons, Alpha Eta

* We are both still alive.

Our second installation!!

Whee! how delighted we were when we learned that we could go to Florida and help in the installation of the baby chapter. This enthusiasm was increased perhaps because both of us had been in the chapter installed three years before at William and Mary and since had always wanted to help make another group happy as we were made then. Our fatigue from the trip was immediately outweighed when we met several Thetas in Jacksonville and were so cordially received at Tallahassee by other Thetas and the future Beta Nus.