

has come to feel the intangible beauty of Theta ideals. So she gains an increased loyalty to the fraternity, and in this gathering of noblest womanhood, she finds the truest sisterhood."

*Hester Harper, Psi*

## ALPHA OMEGA OF KAPPA ALPHA THETA

The first week-end of December was an eventful one for many Thetas and for a group of girls at the University of Pittsburgh. It was away back last July that Kappa Alpha Theta in convention assembled granted a college charter to Pi Theta Nu at the University of Pittsburgh. Installation was delayed these five months, for various and sufficient reasons, including the late opening of "Pitt" and the wedding of our Grand president.

Four national officers were in charge of the installation, Mrs. Mecklin, Grand president, Mrs. Forde, Grand vice-president, Mrs. Overturf, president of District III, to which Alpha Omega will belong, and Miss Green, Grand secretary. They were ably assisted by the Pittsburgh alumnae chapter, a large delegation from Mu, and one delegate from Eta. That no delegates, from Alpha Gamma and Alpha Tau, the two other college chapters in the District, were able to be present was a keen disappointment to those chapters, whose members were kept at home by an unfortunate conflict of the date with vital college functions in their *alma maters*.

The ceremonies opened on the evening of December 2, when twenty-one alumnae and fourteen undergraduate members of Pi Theta Nu, were pledged to Kappa Alpha Theta. The services were followed by an hour's happy "getting acquainted."

On Friday, December 3, the installing officers and Miss Agnes Smith, Mu, and Mrs. Jessamine De Haven Lewis, former president of the District, went early to the delightful home of Miss Mary Boss, Alpha Delta and Pittsburgh alumna, to prepare for the initiations, for which services this hospitable home had been loaned.

Early in the afternoon Thetas began to arrive in numbers and by three o'clock all was in readiness for the first candidates for initiation. The rest of the afternoon and the evening, after an hour's interlude for a friendly lunch, were given up to the initiating of the thirty-five new members of Kappa Alpha Theta.

On Saturday, December 4, at the Hotel Schenley occurred the installation services, followed directly by the installation luncheon. This was a very happy occasion, with ninety-three Thetas, representing sixteen different college chapters, gathered for an hour of feasting and sociability. At the close of the luncheon, Mrs. Leola Vancil Randall, Rho and Pittsburgh alumna, charmingly presided over the following programme.

Theta grace, Jessie Boulton Thorpe, Iota and Pittsburgh alumna.  
Theta welcome, Mary Porter Boss, Alpha Delta and Pittsburgh alumna.

Theta affinity, Helen Frost, Alpha Omega.

Theta fraternity, Eugenie Rounsavell Overturf, president District III, Alpha Gamma and Columbus alumna.

Theta trinity, L. Pearle Green, Grand secretary, Phi.

Theta divinity, Hope Davis Mecklin, Grand president, Alpha Epsilon and Pittsburgh alumna.

The Thetas present on this occasion were:

Mu: Belle L. Pratt, Jessie A. Williams, Maud B. Moore, Josephine Bates Webb, Chloe Bartholomew MacLaren, Anna McConnell, Agnes E. Smith, Agnes Robinson, Katherine Illingworth, Katherine Adams McCune, Ethel J. Canfield, Jessamine De Haven Lewis, Isabel Clingensmith, Beulah M. Grauel, Bess M. Metcalf, Muza Anchors, Coral M. Lowe, Grace H. Miller, Ruth Townley, Ellen May Girsham, Lilian Fetzner, Janet Simcox, Sabra Vought, Mae Goff Smith, Ella D. Goff, Nelle Sherrel Seneff, Gertrude Simpson, Lottie Hammett, Blanche Taylor, Caryl M. Reynolds, Adelaide Singley.

Alpha Delta: Ida Evans Bixler, Alice Bennett Pollard, Mary Porter Boss, Anna M. Slease.

Epsilon: Helen McCulloch, Katherine West, Katherine McCulloch, Sarah J. Anderson.

Alpha Beta: Millo McCain Kehew, Helen Moore Lanphere, Elizabeth B. Miller Nevin.

Eta: Beatrice Lambrecht, Annie L. White Emley, Mary L. White Brown.

Alpha Epsilon: Hope Davis Mecklin, Josephine T. Sackett.

Alpha Gamma: Eugenie R. Overturf, Edith H. Hipple.

Iota: Jessie Boulton Thorpe, Sadie Boulton Eidlitz.

Zeta: Gladys McVay Skinner.

Kappa: Hazel Allison Forde.

Rho: Leola Vancil Randall.

Phi: L. Pearle Green.

Chi: Grace Ramsey Davis.

Alpha Pi: E. Gertrude Skinner.

Alpha Upsilon: Helen Tillotson.

Alpha Omega: Cecile J. Boyd, Helene G. Reed, Carrie B. McClarren, Hazel G. Keffer, Louise Borland, Helen Frost, Carolyn E. Farrar, Gretchen B. Buske, Bertha Ortmann, Katherine Jordan, Jennie Thompson, Matilda Moldenhauer, Helen P. Bowman, Katherine Mulheim, Mabel Love, Eleanor G. Spangler, Marie Munroe, Anna Roessle, Louise Culley, Helen MacLeod, Helen Schoneck, Naomi Brand, Ellen Koch, Jane Fisher, Frances Foulke, Jean Don-

January, 1916

aldson, Mary Fisher, Verstine Finley, Marion Lindsay, Esther M. Williams, Zella Chambers, Agnes Willis, Ruth Harvey, Brenda Wright, Anna Lora Hopkins, all charter members.

On Saturday evening at the Twentieth century club house, Alpha Omega and Pittsburgh alumnae chapters gave a reception at which the visiting Thetas were introduced to some four hundred Pittsburgh friends of the two chapters. The formal reception was followed by informal dancing and the evening was a most delightful climax to the festivities.

On Sunday various conferences and the first chapter meeting, under the able leadership of Mrs. Forde, Grand vice-president, were held. The installing officers, and some members of Pittsburgh alumnae were the supper guests of Dr. Goff and Mrs. Mae Goff Smith at their home in Bellevue.

These days of formal installation were full of Theta spirit and inspiration. The faithful, able work of Pittsburgh alumnae chapter made the last preparations very simple; while the very efficient way in which Alpha Omega managed her part in preparations argues well for the future of Theta in the University of Pittsburgh.

But the festivities were not yet over. On Monday, Mrs. Frost, mother of Helen Frost, president of Alpha Omega, gave a friendly luncheon for the installing officers and Mrs. McCormick, wife of the Chancellor of the University of Pittsburgh, entertained the Thetas of Pittsburgh and their guests at a delightful tea. This day closed with further conferences with newly elected chapter officers and installing officers. These, however, did not have to be as extensive as usual because Mrs. Mecklin is to be a near neighbor to the chapter house, and so able to help as new problems arise. Then on Tuesday the Beta Omicron, local, entertained at a tea for visiting Thetas and the new chapter. Pittsburgh hospitality is quite Southern, for invitation after invitation came in for the rest of the month, and only stern duty took the visitors away from all this gracious courtesy which goes to prove how many real friends Alpha Omega has and how much opportunity is hers.

### UNIVERSITY OF PITTSBURGH

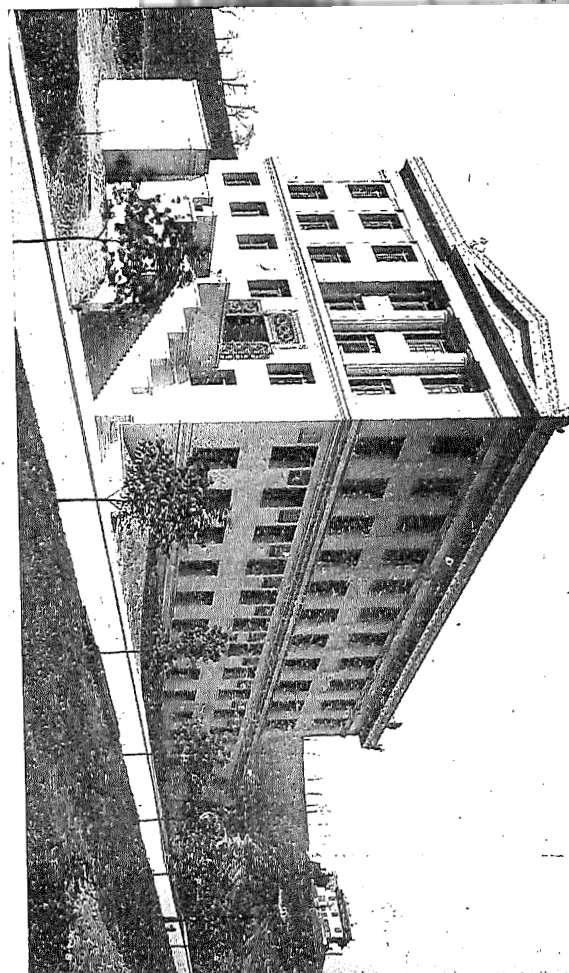
Since we are now really truly sisters of all other Thetas throughout the United States we wish you to know something more about the university in which the youngest chapter expects to uphold Theta dignity.

The university is fast becoming just as much a woman's college as a man's. In this past year alone, there has been an increase of from 250 regular women students to 410. Besides these there are about an equal number of special students enrolled. The total enrollment

ALPHA OMEGA HOME



UNIVERSITY OF PITTSBURGH





ALPHA OMEGA

for this year, exclusive of extension work, numbers 3752 against 3418 for the year of 1914-15. Including extension workers the number would easily swell to 4200.

The college department of the university was founded under the name of the Pittsburgh academy in 1787 and is thus the oldest institution of learning west of the Allegheny mountains with the exception of the University of Nashville. In 1819 the name was changed to the Western University of Pennsylvania and the charter was enlarged to provide for all the functions of a university. From time to time hereafter other schools were added or affiliated—engineering, mines, medicine, dentistry, pharmacy, Allegheny observatory, and graduate schools. In 1908 the name was again changed to the more comprehensive one of the University of Pittsburgh and the institution was moved to its new campus of forty-three acres in Schenley Farms, the educational center of Pittsburgh. Surrounding or near by us now are the best influences that the city can offer for educational advancement. Just next door to us, so to speak, the Schenley park is situated, which provides drives, golf courses, tennis courts and charming picnic spots; within the park also is the Phipp's conservatory, which shows continually many botanical specimens. Adjoining the park is the Carnegie institute of technology; the original Carnegie library, a great help indeed to our students with its libraries, museum, art, architecture and sculpture halls, and concert hall, where our Glee club concerts are given. Equally close by is the Schenley hotel, where many of the college festivities take place. Just across the boulevard stands our beautiful Soldiers' memorial hall of grey stone, modeled on but larger than Grant's tomb of New York. Here the weekly chapel is held. It would never do to omit Forbes' field, the scene of our football victories, when every one of the 30,000 seats was occupied and standing room sold. Among the remaining buildings in the environs are the Athletic association, University, and Twentieth century clubs; a new million and a quarter dollar high school, the Schenley theater, where our Cap and Gown club performances take place, and churches of varied denominations. Let us view the sight, rather inadequately drawn by this scattered description, that reveals itself from the top of our university hill, where the sign *Pitt* nightly discloses the location of the university. Seeming to wish to further consolidate these different forces, the best resident portion of the city extends outwards while on the other side lies the busy city-life of Oakland, only a continuation of the business portion of the city proper.

At the present time seven schools are represented upon the campus. Since the occupation of the new campus, the schools of Economics and of Education have been added; and the Mellon institute of